



PRODUCT CATALOGUE

Sustainable & Innovative Food Packaging

2nd Edition

FOLLOW US
@ANCHOR.EARTH



Contents

3	Sustainability
4	Definitions
5	Materials We Use
6	Our Offer
8	Pulp Packaging
16	Brown Kraft Packaging
30	Napkins
35	Get to Know Your Disposables
36	Cutlery
39	Paper Straws
42	Hot Cups & Lids
50	Cold Cup & Lids
56	Food Wraps
58	Washroom
61	Garbage Bags
62	Gloves
64	Palm Leaf
66	Catering Platters
69	Sandwich Wedges
70	Tamper Evident Containers
72	Cold Containers & Lids
74	Open Trays & Lidding Film
76	Takeaway Food Containers
80	Reusable Microwavable Containers





Sustainability

The latest trends in Foodservice show that there is an increasing demand for sustainable packaging solutions. Hence, caterers and foodservice players are looking for packaging that gives a local, urban, artistic, ultra-fresh look to the prepared foods.

Anchor Packaging is committed to offering a wide range of high quality, environmentally friendly disposable food packaging supplies. By sourcing biodegradable, compostable and sustainable materials, we are helping to reduce the carbon footprint within the Food Industry. From the manufacturing process all the way to the end-user, we are offering more sustainable product choices and awareness.



As a member of the **Australian Packaging Covenant Organisation (APCO)**, Anchor Packaging is committed to working towards Australia's 2025 National Packaging Targets.

By partnering with Anchor Packaging, our customers are joining a growing community of businesses making a commitment to improving the sustainability of their business practices.

Definitions

Have you ever wondered “What does Compostable actually mean”?

Here are some helpful definitions Published by our Partners, Sabert Corporation.

Biodegradable

“Biodegradable” means that a product will break down into carbon dioxide, water and biomass (fuel developed from organic materials) within a reasonable amount of time in a natural environment.

Recyclable

“Recyclable” is defined as products that can be recovered from the waste stream and converted into new raw materials to be used in the creation of new products or parts.

Made from Recycled Materials

“Made from recycled materials” are products whose content is made from industrial or post-consumer recycled materials that were recovered from a waste stream.

Compostable

“Compostable” products are biodegradable but with an added benefit of breaking down to release valuable nutrients into the soil, aiding the growth of trees and plants. These products must degrade within several months in an industrial composting facility and produces no toxic residues.



Composting in Australia

There are around 150 Industrial Composting and Organics Recycling facilities in Australia. Some councils provide composting facilities through their kerbside waste collections either through green organics and garden waste bin or through dedicated organic recycling service. To find a composter visit www.aora.org.au.



Materials We Use

PLA Bioplastic



Poly lactide (PLA) is a natural polyester derived from renewable plant material. During production, Ingeo™ PLA emits up to 80% less CO₂ than the comparable manufacture of traditional plastic like PS and PET*. It looks, feels and performs like traditional plastic, but is low-emission and plant-based to make for a more sustainable product.

PLA is routinely composted around the world in commercial facilities and holds multiple international composting certificates.

*Life Cycle Inventory and Impact Assessment data for 2014 Ingeo™ Poly lactide Production. Industrial Biotechnology, June 2015

Pulp



Moulded-fibre pulp products are made of a sugar cane manufacturing by-product, called Bagasse, an abundant and renewable resource. In the food packaging sector, this natural cellulose is one of the best sustainable alternatives to plastic. It meets all requirements and is not in any way harmful. It is oven proof, microwavable and freezer friendly. Most importantly, it is 100% compostable (suitable for industrial and home composting) and rapidly biodegradable. It takes only 180 days to decompose 1 pulp platter.

Palm Leaf



Made from the fallen leaves of a palm tree, Palm Leaf products are one of the most natural materials. The palm leaf is collected, washed from dirt and then moulded into plates and bowls. No chemicals, dyes, glues, lacquers or toxins are used in the manufacturing process.

Wood



Choosing wood as an alternative to plastic is an environmentally friendly option because it is a natural biodegradable material. It is free from chemicals and other harmful products, and produced from responsibly managed forests.

Wheat



Wheat fibre, which is often considered an agricultural waste product, is a resourceful material for food packaging. It is an attractive environmentally friendly biodegradable material that will lessen the burden on landfills.

Paper



Trustworthy and most importantly renewable, paper is an important raw material that replaces many everyday plastic products. Where possible, we use paper sourced from responsibly managed plantations. Paper packaging makes for naturally elegant and durable food packaging.

PP



Polypropylene (PP) is a crystal clear, functional, durable, resealable and reheatable plastic. It is one of the most widely accepted material for recycling.

PET / PETE



Polyethylene terephthalate (PETE or PET) is a lightweight plastic that is made to be semi-rigid or rigid which makes it more impact resistant, and helps protect food or liquids inside the packaging. It is entirely recyclable.

PVC



Polyvinyl Chloride (PVC) is another type of recyclable plastic material that offers excellent clarity, strength and sealing performance.



Our Offer

We are more than just



Custom Printing

Our printing capabilities are world class. Over the years we have spent a lot of time developing our printing methods. We print using completely non-toxic inks.



Free Service

- **Free storage** in our warehouses, enabling us to ensure nationwide prompt delivery.
- **Development & design** of your custom branded packaging products from start to finish at no extra cost.



Stock Management

Following the initial production lead-time for delivery of your custom branded product, we take complete control of your inventory management to ensure you never run out. Allowing you to sit back, relax, and focus on what's important to you and your business knowing we've got your packaging sorted.



a Packaging Company.



Quality

We strive to provide you with the highest quality packaging that is not only affordable, but a future friendly solution to traditional food packaging.

Anchor Packaging is HACCP Certified in accordance with the standards of HACCP Australia Food Safety Certification Systems



- yet another demonstration of our commitment to providing safe, high quality packaging products.



Online Ordering

Ordering has never been easier with our secure Customer Online Portal. Just log in, place your order and wait for your products to arrive.

Benefits of using the Customer Portal?

- Place orders and view past orders
- Create a 'favourites list'
- Request quotes on new products
- View up-to-date account information



Reliability

We have extensive warehousing and distribution capabilities, with warehousing facilities in Sydney, Melbourne and Brisbane to ensure your order gets delivered on time. Furthermore, our stock levels are meticulously evaluated to ensure items are always in stock and ready to be despatched.



100% Compostable Pulp Food Packaging



What makes this the best Pulp on the market?

- Certified Compostable for both industrial and home composting (will even decompose in landfill or the ocean)
- 100% organic and responsibly sourced materials used in manufacturing process
- Holds shape with wet and greasy contents for longer (around 10 days)
- Microwave and oven safe - Can withstand temperatures of -20° C up to 200° C.
- Sabert manufactures both the bases and double lock lids, ensuring optimal lid fit and leak resistance.
- Unique styles and shapes to complement and not match current shapes on the market.
- Thicker and heavier gauge



Made entirely from Pulp



100% Certified Home Compostable



100% Certified Commercial Compostable



Suitable for hot & cold food



Microwave, oven & Freezer safe



HACCP Accredited

SABERT™ Pulp Round Bowls & Lids



16oz Round Bowl



PET Lid for 16oz Round Bowl



24oz Round Bowl



32oz Round Bowl



48oz Round Bowl



PET Lid for 24oz, 32oz, 48oz Round Bowls



Pulp Lid for 24oz, 32oz, 48oz Round Bowls

CODE	DESCRIPTION	DIMENSIONS	MATERIAL	CARTON QTY	SLEEVE QTY
AS-PRB16	Sabert™ 16oz Pulp Round Bowl	60mm (H) x 150mm (Dia)	Pulp	500	125
AS-PRB16LID	Sabert™ Clear Lid for 16oz Pulp Round Bowl	152mm (Dia)	PET	500	125
AS-PRB24	Sabert™ 24oz Pulp Round Bowl	41.6mm (H) x 208mm (Dia)	Pulp	300	75
AS-PRB32	Sabert™ 32oz Pulp Round Bowl	60.7mm (H) x 208mm (Dia)	Pulp	300	75
AS-PRB48	Sabert™ 48oz Pulp Round Bowl	81mm (H) x 208mm (Dia)	Pulp	300	75
AS-PRBLID	Sabert™ Clear Lid for 24oz, 32oz, 48oz Pulp Round Bowls	213mm (Dia)	PET	300	75
AS-PRBPULPLID	Sabert™ Pulp Lid for 24oz, 32oz, 48oz Pulp Round Bowls	216mm (Dia)	Pulp	300	75

SABERT™ Pulp Oval Bowls & Lids



620ml Oval Bowl



770ml Oval Bowl



Lid for 620ml & 770ml Oval Bowls

CODE	DESCRIPTION	DIMENSIONS	MATERIAL	CARTON QTY	SLEEVE QTY
AS-POB620	Sabert™ 620ml Pulp Oval Bowl	190mm x 145mm x 50mm	Pulp	300	50
AS-POB770	Sabert™ 770ml Pulp Oval Bowl	190mm x 145mm x 60mm	Pulp	300	50
AS-POBLID	Sabert™ Lid for 620ml & 770ml Pulp Oval Bowls	195mm x 150mm x 20mm	PET	300	50

SABERT™ Pulp Square Bowls & Lids



375ml Square Bowl



500ml Square Bowl



Lid for 375ml & 500ml Square Bowls

CODE	DESCRIPTION	DIMENSIONS	MATERIAL	CARTON QTY	SLEEVE QTY
AS-PSB375	Sabert™ 375ml Pulp Square Bowl	132mm x 132mm x 54mm	Pulp	500	50
AS-PSB500	Sabert™ 500ml Pulp Square Bowl	132mm x 132mm x 67mm	Pulp	500	50
AS-PSBLID-PET	Sabert™ PET Lid for 375ml & 500ml Pulp Square Bowls	136mm x 136mm x 17.7mm	PET	500	50

SABERT™ Pulp Soup Cups & Lids



8oz Soup Cup



12oz Soup Cup



16oz Soup Cup



Lid for Soup Cups

CODE	DESCRIPTION	DIMENSIONS	MATERIAL	CARTON QTY	SLEEVE QTY
AS-PSC8	Sabert™ 8oz Pulp Soup Cup	55.20mm (H) x 126mm (Dia)	Pulp	1000	100
AS-PSC12	Sabert™ 12oz Pulp Soup Cup	69.70mm (H) x 126mm (Dia)	Pulp	1000	100
AS-PSC16	Sabert™ 16oz Pulp Soup Cup	87.70mm (H) x 126mm (Dia)	Pulp	1000	100
AS-PSCLID	Sabert™ Lid for 8oz, 12oz, 16oz Pulp Soup Cups	8.54mm (H) x 132mm (Dia)	PP	1000	100

SABERT™ Pulp Round Plates



7" Round Plate



10" Round Plate

CODE	DESCRIPTION	DIMENSIONS	MATERIAL	CARTON QTY	SLEEVE QTY
AS-PRP7	Sabert™ 7" Pulp Round Plate	18mm (h) x 180mm (Dia)	Pulp	500	125
AS-PRP10	Sabert™ 10" Pulp Round Plate	21mm (h) x 260mm (Dia)	Pulp	500	125

SABERT™ Pulp Buddha Bowls & Lids



750ml Buddha Bowl



1000ml Buddha Bowl



Pulp Lid



PET Lid

CODE	DESCRIPTION	DIMENSIONS	MATERIAL	CARTON QTY	SLEEVE QTY
AS-PBB750	Sabert™ 750ml Buddha Bowl	62.7mm(H) x 168mm(Dia)	Pulp	300	75
AS-PBB1000	Sabert™ 1000ml Buddha Bowl	75.7mm(H) x 168mm(Dia)	Pulp	300	75
AS-PBBLID-PULP	Sabert™ Pulp Lid for 750ml & 1000ml Buddha Bowls	26.4mm(H) x 173mm(Dia)	Pulp	300	75
AS-PBBLID-PET	Sabert™ PET Lid for 750ml & 1000ml Buddha Bowls	13mm(H) x 176mm(Dia)	PET	300	75

SABERT™ PET Poke Bowls & Lids



24oz Poke Bowl



32oz Poke Bowl



Lid for 24oz & 32oz Poke Bowls



100% Recyclable



Suitable for cold food

CODE	DESCRIPTION	DIMENSIONS	MATERIAL	CARTON QTY	SLEEVE QTY
AS-PETPB24	Sabert™ 24oz Anti Fog Clear Poke (Round) Bowl	63mm (H) x 185mm (Dia)	PET	300	50
AS-PETPB32	Sabert™ 32oz Anti Fog Clear Poke (Round) Bowl	74mm (H) x 185mm (Dia)	PET	300	50
AS-PETPBLID	Sabert™ Lid for 24oz & 32oz Clear Poke Bowls	25mm (H) x 185mm (Dia)	PET	300	50

Table of Materials

	COMPOSTABLE	RECYCLABLE	REHEATABLE	MICROWAVEABLE	OVENABLE UP TO 400°F	REFRIGERATOR/ FREEZER FRIENDLY
PULP	●	●	●	●	●	●
PP LIDS		●	●	●		●
PET LIDS		●				●

SABERT™ Pulp Folding Bowls



16oz Folding Square Bowl



24oz Folding Square Bowl



32oz Folding Square Bowl

CODE	DESCRIPTION	DIMENSIONS	MATERIAL	CARTON QTY	SLEEVE QTY
AS-PFC16	Sabert™ 16oz Pulp Folding Square Bowl	294mm x 180mm x 70mm	Pulp	300	150
AS-PFC24	Sabert™ 24oz Pulp Folding Square Bowl	294mm x 228mm x 74mm	Pulp	200	100
AS-PFC32	Sabert™ 32oz Pulp Folding Square Bowl	342mm x 279mm x 53mm	Pulp	150	75

SABERT™ Pulp Hinged Containers



2 Compartment Hinged Container



450ml Hinged Container



600ml Hinged Container



850ml Hinged Container



Snack Box Large



Dinner Box



3 Compartment Hinged Container



4 Compartment Hinged Container

CODE	DESCRIPTION	DIMENSIONS	MATERIAL	CARTON QTY	SLEEVE QTY
AS-HC2C	Sabert™ Pulp Hinged Container 2 Compartment	330mm x 225mm x 55mm	Pulp	300	75
AS-HC450	Sabert™ Pulp Hinged Container 450ml	273mm x 176mm x 49mm	Pulp	300	75
AS-HC600	Sabert™ Pulp Hinged Container 600ml	288mm x 188mm x 55.4mm	Pulp	300	75
AS-HC850	Sabert™ Pulp Hinged Container 850ml	330mm x 225mm x 55mm	Pulp	300	75
AS-SBL	Sabert™ Pulp Snack Box Large	Open: 289mm x 242mm x 50mm Closed: 240mm x 150mm x 90mm	Pulp	300	50
AS-DB	Sabert™ Pulp Dinner Box	Open: 468mm x 238mm x 54mm Closed: 235mm x 230mm x 75mm	Pulp	200	50
AS-HRC3C	Sabert™ Pulp Hinged Container, 3 Compartment	220mm x 478mm x 44mm	Pulp	300	75
AS-HRC4C	Sabert™ Pulp Hinged Container, 4 Compartment	258mm x 445mm x 49mm	Pulp	200	50

SABERT™ Pulp Trays & Lids



6x8.5" Rectangle Tray



Lid for 6x8.5" Rectangle Tray



20oz 6" x 9" Rectangle Tray



30oz 6" x 9" Rectangle Tray



36oz 6" x 9" Rectangle Tray



Pulp Lid for 6" x 9" Rectangle Tray



Pulp Taco Tray



Lid for Pulp Taco Tray



2 Compartment 6" x 9" Tray



3 Compartment 9" x 9" Tray



PET Lid for 9" X 9" Tray



Pulp Lid for 9" X 9" Tray

CODE	DESCRIPTION	DIMENSIONS	MATERIAL	CARTON QTY	SLEEVE QTY
AS-PT6X8.5	Sabert™ 6x8.5" (790ml) Pulp Rectangle Tray	215mm x 158mm x 47mm	Pulp	300	75
AS-PT6X8.5LID	Sabert™ PET Lid for 6x8.5" Rectangle Tray	222mm x 165mm x 12mm	PET	300	75
AS-PRT20	Sabert™ 20oz (550ml) Pulp Rectangle Tray	228mm x 165mm x 28mm	Pulp	300	75
AS-PRT30	Sabert™ 30oz (850ml) Pulp Rectangle Tray	228mm x 165mm x 47mm	Pulp	300	75
AS-PRT36	Sabert™ 36oz (1000ml) Pulp Rectangle Tray	228mm x 165mm x 57mm	Pulp	300	75
AS-PT6X92C	Sabert™ 2 Compartment Pulp Rectangle Tray 6"x9"	228mm x 165mm x 47mm	Pulp	300	75
AS-PT6X9LID-PET	Sabert™ PET Lid for 6" x 9" Pulp Tray	238mm x 175mm x 26mm	PET	300	75
AS-PRTLIDPU	Sabert™ Pulp Lid for 6" x 9" Pulp Tray	236mm x 173mm x 22mm	Pulp	300	75
AS-PRTLID	Sabert™ PET Lid for 20oz, 30oz, 36oz Pulp Trays	238mm x 175mm x 26mm	PET	300	75
AS-PRTLID-PP	Sabert™ PP Lid for 20oz, 30oz, 36oz Pulp Trays	238mm x 174mm x 25mm	PP	300	75
AS-PTT	Sabert™ Pulp Taco Tray	228mm x 165mm x 42mm	Pulp	300	75
AS-PTTLID	Sabert™ PP Lid for Pulp Taco Tray	234mm x 174mm x 48mm	PP	300	75
AS-PT9X93C	Sabert™ 9" x 9" (230ml + 230ml + 440ml) Pulp Tray, 3 Compartment	226mm x 226mm x 44mm	Pulp	300	75
AS-PT9X9LID-PULP	Sabert™ Pulp Lid for 9" x 9" Pulp Tray	229mm x 229mm x 19mm	Pulp	300	75
AS-PT9X9LID-PP	Sabert™ PET Lid for 9" x 9" Pulp Tray	233mm x 233mm x 256mm	PP	300	75
AS-PT9X9LID-PET	Sabert™ PET Lid for 9" x 9" Pulp Tray	235mm x 235mm x 26mm	PET	300	75

TO DECOMPOSE 1 PULP CONTAINER



SABERT™ Pulp Platters & Lids



10.7" Square Platter & Lid

12" Square Platter & Lid

14" Square Platter & Lid

16" Square Platter & Lid

CODE	DESCRIPTION	DIMENSIONS	MATERIAL	CARTON QTY	SLEEVE QTY
AS-PSP10.7	Sabert™ 10.7" Square Pulp Platter	261mm x 261mm x 28mm	Pulp	50	25
AS-PSP10.7LID	Sabert™ Lid for 10.7" Square Pulp Platter	273mm x 273mm x 74mm	PET	25	25
AS-PSP12	Sabert™ 12" Square Pulp Platter	312mm x 312mm x 28mm	Pulp	50	25
AS-PSP12LID	Sabert™ Lid for 12" Square Pulp Platter	318mm x 318mm x 74mm	PET	25	25
AS-PSP14	Sabert™ 14" Square Pulp Platter	359mm x 359mm x 31mm	Pulp	25	25
AS-PSP14LID	Sabert™ Lid for 14" Square Pulp Platter	367mm x 367mm x 89mm	PET	25	25
AS-PSP16	Sabert™ 16" Square Pulp Platter	401mm x 401mm x 31mm	Pulp	50	25
AS-PSP16LID	Sabert™ Lid for 16" Square Pulp Platter	408mm x 408mm x 90mm	PET	25	25

SABERT™ Pulp Catering Bowls & Lids



8oz Catering Bowl

12oz Catering Bowl

16oz Catering Bowl

24oz Catering Bowl



Lid for 8oz, 12oz Catering Bowls



Lid for 16oz & 24oz Catering Bowls

CODE	DESCRIPTION	DIMENSIONS	MATERIAL	CARTON QTY	SLEEVE QTY
AS-PSB80	Sabert™ 8oz Square Pulp Catering Bowl	273mm x 273mm x 67.3mm	Pulp	50	50
AS-PSB120	Sabert™ 12oz Square Pulp Catering Bowl	273mm x 273mm x 94.7mm	Pulp	50	50
AS-PSB160	Sabert™ 16oz Square Pulp Catering Bowl	358mm x 358mm x 71.6mm	Pulp	25	25
AS-PSB240	Sabert™ 24oz Square Pulp Catering Bowl	358mm x 358mm x 100.8mm	Pulp	25	25
AS-PSBLID-S	Sabert™ Clear Lid to suit 8oz & 12oz Catering Bowls	279mm x 279mm x 12mm	PET	50	50
AS-PSBLID-L	Sabert™ Clear Lid to suit 16oz & 24oz Catering Bowls	366mm x 366mm x 14.6mm	PET	25	25

HIGH-HEAT PULP PACKAGING

THIS IS A
MADE TO
ORDER ITEM



Sabert™ High-heat Pulp Packaging is a “ONE PACKAGE” solution for freezing to high heat application. Help reduce packaging costs and eliminate artificial materials to achieve high efficiency and lower costs.



100% Certified
Commercial Compostable



100% Certified
Home Compostable

FREEZER > OVEN > TABLE

It can be used from -20°C to $+270^{\circ}\text{C}$



FREEZER
-20°C

-20°C & 30 Days

Can be stored in freezing at -20°C for 30 days and still keep product strength.



OVEN
250°C

250°C & 45 mins

Suitable for use in conventional oven (suggested use temperature below 250°C and time less than 45 minutes).



MICROWAVE
1200W

1200W & 6 mins

Suitable for use in microwave oven (suggested usage power below 1200W and time less than 6 minutes).



COMBINATION OVEN
270°C

270°C & 150 secs

Suitable for use in Combination Oven (suggested use temperature below 270°C and time less than 150 seconds).

Pulp Portion Containers



Our brand new Pulp Portion Containers are the perfect serving solution for sauces, condiments and sides, where small portions are required.



This pulp can go into Landfill and will still decompose (at the right temperature) in under 1 year.



100% Home Compostable



Responsibly Sourced
Material



Suitable for hot
& cold contents

BetaEco™

Pulp Portion Containers



2oz Portion Container



Pulp Lid for 2oz Container



PET Lid for 2oz Container



4oz Portion Container



Pulp Lid for 4oz Container



PET Lid for 4oz Container

CODE	DESCRIPTION	DIMENSIONS	MATERIAL	CARTON QTY	SLEEVE QTY
BE-PULPC02	BetaEco™ 2oz Pulp Portion Container	60mm (dia) x 30mm	Pulp	2000	100
BE-PULPC02LID	BetaEco™ Pulp Lid for 2oz Portion Container	60mm Ø	Pulp	2000	100
BE-PETPC02LID	BetaEco™ PET Lid for 2oz Portion Container	60mm Ø	PET	2000	100
BE-PULPC04	BetaEco™ 4oz Pulp Portion Container	80mm (dia) x 53mm	Pulp	1000	50
BE-PULPC04LID	BetaEco™ Pulp Lid for 4oz Portion Container	80mm Ø	Pulp	1000	100
BE-PETPC04LID	BetaEco™ PET Lid for 4oz Portion Container	80mm Ø	PET	1000	100



DID YOU KNOW?

63%

of consumers say they are more likely to visit a food service operation they view as socially conscious¹.

55%

of consumers say they're willing to pay more for products and services provided by companies that are committed to positive social and environmental impact¹.

56%

of consumers believe it is important that food service packaging is "green"¹.

BetaBoard™

Takeaway Food Packaging

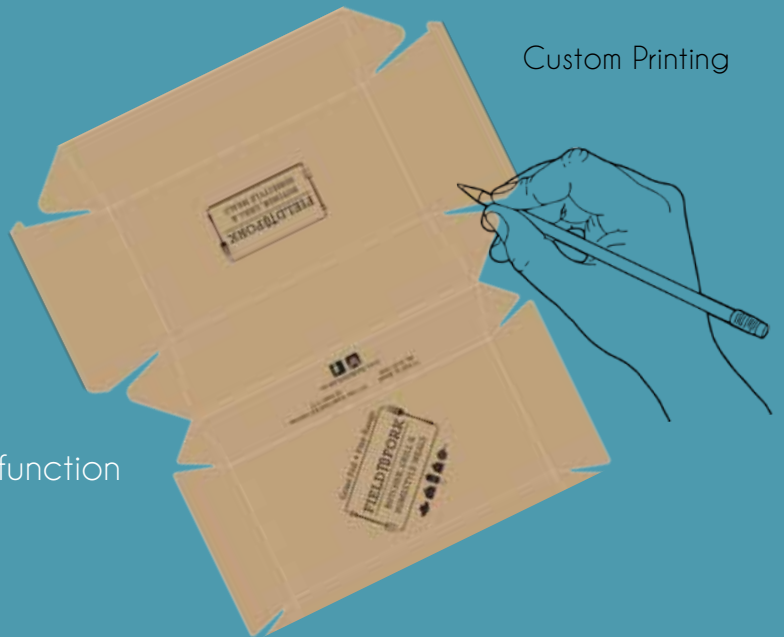


Packaging made from Paper not plastic

The BetaBoard™ design makes it both strong and sturdy, is great looking, easily branded and 100% Compostable.

- Made from Brown Kraft Paper
- 100% Compostable
- Strong sturdy construction
- Suitable for hot and cold foods
- Microwavable and grease resistant
- Can be custom printed
- Ideal for cafes, restaurants, caterers, function centres, schools and universities

Custom Printing



Responsibly Sourced Paper



Heat Resistant



100% Compostable



Suitable for hot & cold food



FSC Certified



FDA Approved



HACCP Accredited

BETABOARD™ Takeaway Boxes



Burger Box



Burger Box Extra Large



Sandwich Wedge



Chip Cup



Pizza Box



Dinner Box



Hot Dog Box



Open Hot Dog Tray



Snack Box Regular



Snack Box Large



Family Pack

CODE	DESCRIPTION	DIMENSIONS	MATERIAL	CARTON QTY	SLEEVE QTY
APBBBB	BetaBoard™ Burger Box	105mm x 105mm x 85mm	Brown Corrugate Paper	250	50
APBBBBGXL	BetaBoard™ Burger Box Extra Large	111mm x 111mm x 111mm	Brown Corrugate Paper	150	50
APBBCC	BetaBoard™ Chip Cup	70mm x 45mm x 90mm	Brown Corrugate Paper	500	50
APBBWSW	BetaBoard™ Sandwich Wedge	120mm x 73mm x 120mm	Brown Corrugate Paper	500	100
APBBHD	BetaBoard™ Hot Dog Box	208mm x 70mm x 75mm	Brown Corrugate Paper	200	50
APBBOHDT	BetaBoard™ Open Hot Dog Tray	190mm x 70mm x 50mm	Brown Corrugate Paper	300	50
APBBDB	BetaBoard™ Dinner Box	178mm x 160mm x 80mm	Brown Corrugate Paper	150	50
APBBPB	BetaBoard™ Pizza Box	163mm x 163mm x 47mm	Brown Corrugate Paper	250	84
APBBSBR	BetaBoard™ Snack Box Regular	175mm x 90mm x 84mm	Brown Corrugate Paper	200	50
APBBSBL	BetaBoard™ Snack Box Large	205mm x 107mm x 77mm	Brown Corrugate Paper	200	50
APBBFP	BetaBoard™ Family Pack	290mm x 170mm x 85mm	Brown Corrugate Paper	100	50

BETABOARD™ Food Trays



Tray 1



Tray 2



Tray 3



Tray 4



Tray 5

CODE	DESCRIPTION	DIMENSIONS	MATERIAL	CARTON QTY	SLEEVE QTY
APBBT1	BetaBoard™ Tray 1	139mm x 91mm x 50mm	Brown Corrugate Paper	500	50
APBBT2	BetaBoard™ Tray 2	178mm x 178mm x 45mm	Brown Corrugate Paper	240	60
APBBT3	BetaBoard™ Tray 3	180mm x 134mm x 45mm	Brown Corrugate Paper	240	60
APBBT4	BetaBoard™ Tray 4	152mm x 228mm x 45mm	Brown Corrugate Paper	240	60
APBBT5	BetaBoard™ Tray 5	255mm x 179mm x 58mm	Brown Corrugate Paper	100	50

Extra Large Burger Box Dimensions



BETABOARD™ White Range



Burger Box



Dinner Box



Snack Box Regular



Snack Box Large



Tray 1



Tray 3

CODE	DESCRIPTION	DIMENSIONS	MATERIAL	CARTON QTY	SLEEVE QTY
APBBBBW	BetaBoard™ Burger Box White	105mm x 105mm x 85mm	White Corrugate Paper	250	50
APBDBW	BetaBoard™ Dinner Box White	178mm x 160mm x 80mm	White Corrugate Paper	150	50
APBBSBRW	BetaBoard™ Snack Box Regular White	175mm x 90mm x 84mm	White Corrugate Paper	200	50
APBBSBLW	BetaBoard™ Snack Box Large White	205mm x 107mm x 77mm	White Corrugate Paper	200	50
APBBT1W	BetaBoard™ Tray 1 White	290mm x 170mm x 85mm	White Corrugate Paper	500	50
APBBT3W	BetaBoard™ Tray 3 White	290mm x 170mm x 85mm	White Corrugate Paper	240	60



BetaKraft™

Brown Kraft Packaging



The most cost effective and sustainable solutions for your food packaging needs.

Made from Brown Kraft Paper sourced from responsibly managed plantations, BetaKraft™ Food Bowls, Containers and Lunch Boxes are a sustainable disposable packaging option for restaurants, cafes and take-away shops serving any type of hot or cold foods such as soup, pasta, salad, fruit or even ice-cream.



Responsibly Sourced Paper



Microwave safe



100% Recyclable



Suitable for hot & cold food



FSC Certified



FDA Approved



HACCP Accredited

BETAKRAFT™ Food Bowls



Small Food Bowl



Medium Food Bowl



Large Food Bowl



Extra Large Food Bowl



Small PET Clear Lid



Small PP Clear Lid



Large PET Clear Lid



Large PP Clear Lid

CODE	DESCRIPTION	DIMENSIONS	MATERIAL	CARTON QTY	SLEEVE QTY
BKFB-S	BetaKraft™ 500ml Food Bowl - Small	150mm x 128mm x 45mm	Brown Kraft	400	50
BKFB-M	BetaKraft™ 750ml Food Bowl - Medium	150mm x 128mm x 60mm	Brown Kraft	400	50
BKFB-L	BetaKraft™ 1000ml Food Bowl - Large	150mm x 128mm x 78mm	Brown Kraft	400	50
BKFB-XL	BetaKraft™ 1300ml Food Bowl - Extra Large	184mm x 166mm x 66mm	Brown Kraft	200	50
BKFBLID-S	BetaKraft™ PET Clear Lid - Small to suit 500ml - 1000ml Food Bowls	150mm Ø	PET	400	50
BKFBLIDPP-S	BetaKraft™ PP Clear Lid - Small to suit 500ml - 1000ml Food Bowls	150mm Ø	PP	400	50
BKFBLID-L	BetaKraft™ PET Clear Lid - Large to suit 1300ml Food Bowl	184mm Ø	PET	200	50
BKFBLIDPP-L	BetaKraft™ PP Clear Lid - Large to suit 1300ml Food Bowl	184mm Ø	PP	200	50



BETAKRAFT™ Food Containers & Lids



CODE	DESCRIPTION	DIMENSIONS	MATERIAL	CARTON QTY	SLEEVE QTY
BK-08FC	BetaKraft™ 8oz Hot/Cold Food Container	90mm x 75mm x 61mm	Brown Kraft	500	25
BK-12FC	BetaKraft™ 12oz Hot/Cold Food Container	90mm x 73mm x 86mm	Brown Kraft	500	25
BK-16FC	BetaKraft™ 16oz Hot/Cold Food Container	90mm x 75mm x 100mm	Brown Kraft	500	25
BK-26FC	BetaKraft™ 26oz Hot/Cold Food Container	116mm x 93mm x 110mm	Brown Kraft	500	25
BK-32FC	BetaKraft™ 32oz Hot/Cold Food Container	116mm x 90mm x 135mm	Brown Kraft	500	25
BK-LID-S	BetaKraft™ Small Lid to suit 8oz - 16oz Food Containers	90mm Ø	Brown Kraft	500	25
BK-LID-L	BetaKraft™ Large Lid to suit 26oz - 32oz Food Containers	116mm Ø	Brown Kraft	500	25

BETAKRAFT™ Sleeve Wrap Packs



CODE	DESCRIPTION	DIMENSIONS	MATERIAL	CARTON QTY	SLEEVE QTY
BS-SHORT	BetaSleeve™ Food Wraps, Short	183mm x 114mm x 44mm	Brown Kraft	250	25
BS-SQUARE	BetaSleeve™ Food Wraps, Square	145mm x 150mm x 55mm	Brown Kraft	250	25
BS-LONG	BetaSleeve™ Food Wraps, Long	230mm x 110mm x 55mm	Brown Kraft	250	25

BETAECO™

Takeaway Brown Kraft Paper Bags



Responsible Sourced Paper



100% Recyclable



Custom Printing



FSC Certified



HACCP Accredited



CODE	DESCRIPTION	DIMENSIONS	MATERIAL	CARTON QTY
BE-BKPB-S	BetaEco™ Takeaway Brown Kraft Paper Bag, Small	280mm(H) x 280mm(W) x 150mm (Bottom Gusset)	Brown Kraft	500
BE-BKPB-M	BetaEco™ Takeaway Brown Kraft Paper Bag, Medium	305mm(H) x 305mm(W) x 170mm (Bottom Gusset)	Brown Kraft	250
BE-BKPB-L	BetaEco™ Takeaway Brown Kraft Paper Bag, Large	320mm(H) x 350mm(W) x 230mm (Bottom Gusset)	Brown Kraft	250

- Made from top quality Kraft Paper (FSC Certified)
- Features a paper twist handle for extra strength and durability
- Perfect sizes for takeaway orders and deliveries

YOUR BRAND, YOUR WAY!

Build your brand image by Customising your bags with our print service.



BetaKraft™ FOOD TUBS

COMING SOON



4 containers - one lid size fits all!

- Made from Kraft Paper with PP lining for extra strength.
- Rigid construction.
- Excellent for food to go.
- Stackable.
- A tight fitting 'one size fits all' lid, in three material options.
- Lids available in Kraft, PP and rPet.
- Microwave and freezer safe.
- Customised artwork available.
- Easy opening and reclosing.



Responsibly Sourced
Paper



100%
Recyclable



Suitable for hot
and cold food



Microwave &
Freezer Safe



FSC Certified



FDA Approved



HACCP
Accredited

BETAKRAFT™ Kraft Food Tubs



500ml Food Tub



650ml Food Tub



750ml Food Tub



1000ml Food Tub



Kraft Lid



PP Clear Lid



PET Anti Mist Lid

4 containers - one lid size fits all!

CODE	DESCRIPTION	DIMENSIONS	MATERIAL	CARTON QTY	SLEEVE QTY
BK-FT500	BetaKraft™ Food Tub 500ml	173mm x 120mm x 40mm	Kraft PP Lined	300	25
BK-FT650	BetaKraft™ Food Tub 650ml	173mm x 120mm x 51mm	Kraft PP Lined	300	25
BK-FT750	BetaKraft™ Food Tub 750ml	173mm x 120mm x 57mm	Kraft PP Lined	300	25
BK-FT1000	BetaKraft™ Food Tub 1000ml	173mm x 120mm x 75mm	Kraft PP Lined	300	25
BK-FTLIDPP	BetaKraft™ Paper Lid for Food Tubs	173mm x 120mm	Kraft PP Lined	300	25
BK-FTLIDPET	BetaKraft™ PET Anti mist Lid for Food Tubs	173mm x 120mm	rPET	300	25
BK-FTLIDPP	BetaKraft™ Clear PP Lid for Food Tubs	173mm x 120mm	PP	300	25



BetaCater™

Catering Boxes and Lids



✓ Food Packs ✓ Gift Packs

✓ Picnic Hampers ✓ Flower or Dessert Hampers

- Made from Recycled Brown Kraft Paper
- Environmentally friendly and stylish packaging solution
- Available in a range of convenient sizes to suit any packaging requirements
- Matching lids with clear plastic windows for maximum visibility.
- A perfect solution for Caterers where food transportation and drop offs are required.
- Can be used as a modern alternative to traditional gift baskets / hampers e.g. Fruit Gift Boxes, Flower Deliveries or Chocolate Hampers.



Responsibly Sourced
Paper



100%
Recyclable



Suitable for
cold food



Ideal for
Gift Hampers



FSC Certified



FDA Approved



HACCP
Accredited

BETACATER™ Catering Boxes



Extra Small Catering Box



Small Catering Box



Medium Catering box



Large Catering Box



Extra Large Catering Box

CODE	DESCRIPTION	DIMENSIONS	MATERIAL	CARTON QTY
BCB-XS	BetaCater™ Catering Box - Extra Small (Catering Tray 1)	258mm x 150mm x 80mm	Brown Kraft	100
BCBLID-XS	BetaCater™ Lid for Catering Box - Extra Small (Lid for Catering Tray 1)	258mm x 155mm x 30mm	Brown Kraft with PET Window	100
BCB-S	BetaCater™ Catering Box - Small (Catering Tray 5)	225mm x 225mm x 60mm	Brown Kraft	100
BCBLID-S	BetaCater™ Lid for Catering Box - Small (Lid for Catering Tray 5)	229mm x 229mm x 30mm	Brown Kraft with PET Window	100
BCB-M	BetaCater™ Catering Box - Medium (Catering Tray 2)	360mm x 254mm x 80 mm	Brown Kraft	100
BCBLID-M	BetaCater™ Lid for Catering Box - Medium (Lid for Catering Tray 2)	364mm x 256mm x 30mm	Brown Kraft with PET Window	100
BCB-L	BetaCater™ Catering Box - Large (Catering Tray 3)	560mm x 253mm x 80mm	Brown Kraft	50
BCBLID-L	BetaCater™ Lid for Catering Box - Large (Lid for Catering Tray 3)	565mm x 256mm x 30mm	Brown Kraft with PET Window	50
BCB-XL	BetaCater™ Catering Box - Extra Large (Catering Tray 4)	451mm x 311mm x 80mm	Brown Kraft	50
BCBLID-XL	BetaCater™ Lid for Catering Box - Extra Large (Lid for Catering Tray 4)	454mm x 313mm x 30mm	Brown Kraft with PET Window	50



CULINAIRE™

Napkins



We have a range of styles, colours, sizes and fold options available in our Napkins. From our basic white 1ply napkin options for fast food outlets or stylish Brown Kraft napkins, to our sophisticated linen look dinner napkins....

We have something for every occasion.



100% Recyclable
Standard Napkins



100% Compostable
Brown Kraft Napkins



Custom Printing



Strong & Durable

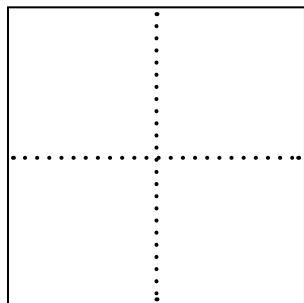


Responsibly Sourced
Paper



HACCP
Accredited

Napkins Specifications Guide



Cocktail, Quarter Fold

Size (open): 240mm x 240mm

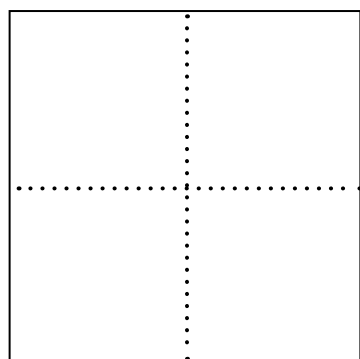
Size (folded): 120mm x 120mm



Dispenser

Size (open): 210mm x 200mm

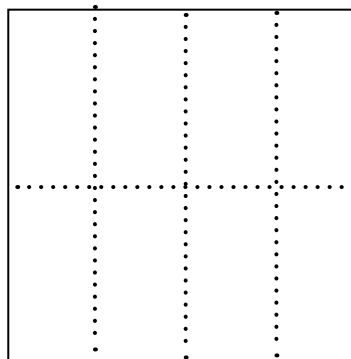
Size (folded): 125mm x 95mm



Luncheon, Quarter Fold

Size (open): 300mm x 300mm

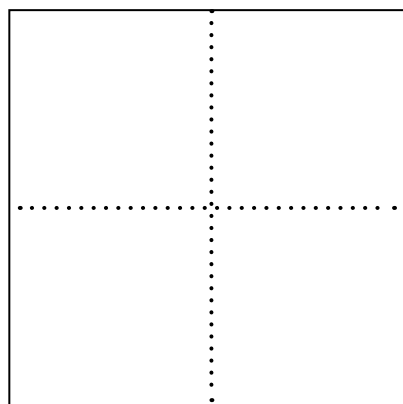
Size (folded): 150mm x 150mm



Luncheon, GT Fold

Size (open): 300mm x 300mm

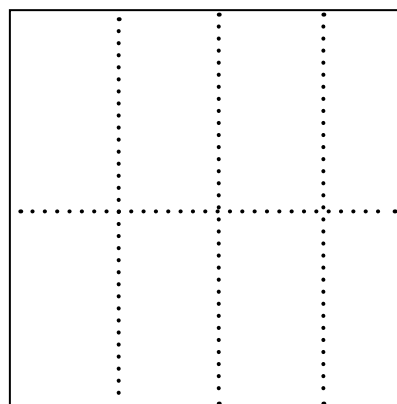
Size (folded): 75mm x 150mm



Dinner, Quarter Fold

Size (open): 400mm x 400mm

Size (folded): 200mm x 200mm



Dinner, GT Fold (8 fold)

Size (open): 400mm x 400mm

Size (folded): 100mm x 200mm

EcoSaver Dinner, GT Fold (6 fold)

Size (open): 300mm x 400mm

Size (folded): 100mm x 200mm

Ply Guide



1 ply

Basic thickness



2 ply

2 layers of paper



Quilted

Thick with aeration throughout the napkin

Culinaire™ Dispenser Napkins



Brown Kraft Dispenser Napkin



White Dispenser Napkin



Tall E-Fold White Dispenser Napkin



Single Save Dispenser Napkin

CODE	DESCRIPTION	DIMENSIONS	MATERIAL	CARTON QTY	SLEEVE QTY
CUL-1DISPRBK	Culinaire™ Recycled Brown Kraft Dispenser Napkin	240mm x 220mm	Recycled Paper	5000	250
CUL-1DISP	Culinaire™ 1ply White Dispenser Napkin	210mm x 200mm	Recycled Paper	5000	250
CUL-1DISPTE	Culinaire™ Tall E-Fold 1 ply White Dispenser Napkin	240mm x 240mm	Recycled Paper	5000	250
CUL-SSDW	Culinaire™ Single Save White Dispenser Napkin	330mm x 210mm	Recycled Paper	6000	250

Culinaire™ Cocktail Napkins



Quilted Cocktail Napkins

2ply Cocktail Napkins

CODE	DESCRIPTION	DIMENSIONS	MATERIAL	CARTON QTY	SLEEVE QTY
CUL-QCWH	Culinaire™ Quilted Cocktail White	240mm x 240mm	Recycled Paper	2000	250
CUL-QCBK	Culinaire™ Quilted Cocktail Black	240mm x 240mm	Recycled paper	2000	250
CUL-2CRBK	Culinaire™ Recycled Brown Kraft 2ply Cocktail	240mm x 240mm	Recycled Paper	2000	250
CUL-QCRBK	Culinaire™ Recycled Brown Kraft Quilted Cocktail	240mm x 240mm	Recycled Paper	2000	250
CUL-2CWH	Culinaire™ 2 ply Cocktail White	240mm x 240mm	Recycled Paper	2000	250
CUL-2CBK	Culinaire™ 2 ply Cocktail Black	240mm x 240mm	Recycled Paper	2000	250

Culinaire™ Dinner Napkins



EcoSaver Quilted GT Fold



EcoSaver Quilted GT Fold



Quilted GT Fold



2ply Quarter Fold



2ply GT Fold



Quilted Quarter Fold



Quilted GT Fold



Quilted Quarter Fold



Quilted GT Fold



Linen Look Quarter Fold



Linen Look GT Fold



Quilted Cutlery Pouches

CODE	DESCRIPTION	DIMENSIONS	MATERIAL	CARTON QTY	SLEEVE QTY
CUL-QDRBKGT6	Culinaire™ Eco Saver Recycled Brown Kraft Quilted Dinner GT Fold	300mm x 400mm	Recycled Paper	2000	100
CUL-QWHDG6	Culinaire™ Eco Saver White Quilted Dinner GT Fold	300mm x 400mm	Recycled Paper	2000	100
CUL-QDRBKGT	Culinaire™ Recycled Brown Kraft Quilted Dinner GT Fold	400mm x 400mm	Recycled Paper	1000	100
CUL-2WHD	Culinaire™ 2ply Dinner White Quarter Fold	400mm x 400mm	Recycled Paper	1000	100
CUL-2WHDG	Culinaire™ 2ply Dinner White GT Fold	400mm x 400mm	Recycled Paper	1000	100
CUL-QDWH	Culinaire™ Quilted Dinner White Quarter Fold	400mm x 400mm	Recycled Paper	1000	100
CUL-QWHDG	Culinaire™ Quilted Dinner White GT Fold	400mm x 400mm	Recycled Paper	1000	100
CUL-QDBK	Culinaire™ Quilted Dinner- Black Quarter Fold	400mm x 400mm	Recycled Paper	1000	100
CUL-QDBKGT	Culinaire™ Quilted Dinner -Black GT Fold	400mm x 400mm	Recycled Paper	1000	100
CUL-LLDQT	Culinaire™ Linen Look Dinner White Quarter Fold	400mm x 400mm	Recycled Paper	250	50
CUL-LLDGT	Culinaire™ Linen Look Diner White GT Fold	400mm x 400mm	Recycled Paper	250	50
CUL-QDRBKCP	Culinaire™ Quilted Recycled Brown Kraft Pouch Napkin	300mm x 340mm	Recycled Paper	1200	100
CUL-QDWCP	Culinaire™ Quilted White Pouch Napkin	300mm x 340mm	Recycled Paper	1200	100

Culinaire™ Lunch Napkins



1ply Quarter Fold



1ply GT Fold



1ply Quarter Fold



1ply GT Fold



2ply Quarter Fold



2ply GT Fold



Quilted Quarter Fold



Quilted GT Fold



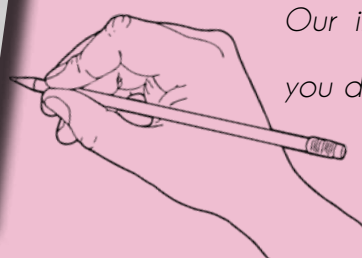
2ply GT Fold

CODE	DESCRIPTION	DIMENSIONS	MATERIAL	CARTON QTY	SLEEVE QTY
CUL-1LRBK	Culinaire™ Recycled Brown Kraft 1ply Luncheon Quarter Fold	300mm x 300mm	Recycled Paper	3000	500
CUL-1LRBKGT	Culinaire™ Recycled Brown Kraft 1ply Luncheon GT Fold	300mm x 300mm	Recycled Paper	3000	500
CUL-2LKGT	Culinaire™ Recycled Brown Kraft 2ply Luncheon GT Fold	300mm x 300mm	Recycled Paper	2000	100
CUL-1LW	Culinaire™ 1ply Luncheon White Quarter Fold	300mm x 300mm	Recycled Paper	3000	500
CUL-1LWGT	Culinaire™ 1ply Luncheon White GT Fold	300mm x 300mm	Recycled Paper	3000	250
CUL-2LWH	Culinaire™ 2ply Luncheon White Quarter Fold	300mm x 300mm	Recycled Paper	2000	100
CUL-2LWHGT	Culinaire™ 2ply Luncheon White GT Fold	300mm x 300mm	Recycled Paper	2000	100
CUL-QLWH	Culinaire™ Quilted Luncheon White Quarter Fold	300mm x 300mm	Recycled Paper	2000	100
CUL-QWHLGT	Culinaire™ Quilted White Luncheon GT Fold	300mm x 300mm	Recycled Paper	2000	100



Improve your Brand or Product Image with

Custom Printed Napkins.



Our internal design team can help you design your own Custom Napkins.

GET TO KNOW YOUR DISPOSABLES

NAME	MATERIAL	DISPOSAL	TIME TO DECOMPOSE	SUSTAINABILITY RATING
 01 PET	POLYETHYLENE TEREPHTHALATE	 RECYCLE	∞	3/5
 02 PE	POLYETHYLENE	 RECYCLE	∞	3/5
 5 PP	POLYPROPYLENE	 RECYCLE	∞	3/5
 PULP	MIXED FIBRES: BAGASSE WHEAT SUGARCANE	 HOME COMPOST	UP TO 90 DAYS	5/5
 7 PLA	POLYLACTIC ACID	 INDUSTRIAL COMPOST	UP TO 180 DAYS	4/5
 3 PVC	POLYVINYL CHLORIDE	 RECYCLE	∞	3/5
 6 PS	POLYSTYRENE	UNABLE TO BE RECYCLED IN KERBSIDE RECYCLING	∞	0/5
	WOOD	 COMPOST	UP TO 1 YEAR	5/5
	PAPER	 INDUSTRIAL COMPOST	UP TO 6 WEEKS	4/5
	PALM LEAF	 INDUSTRIAL COMPOST	UP TO 6 MONTHS	4/5
	BAMBOO	 INDUSTRIAL COMPOST	UP TO 6 MONTHS	4/5
 41 ALU	ALUMINIUM	 RECYCLE	∞	3/5

BetaEco™

Cutlery & Accessories



Wooden Cutlery Bio-based (PLA) Cutlery Plant Starch (PSM) Cutlery



Responsibly Sourced
Material



Heat Resistant



100% Compostable



Options for hot and
cold food



HACCP Accredited

BetaEco^M Wooden Cutlery



Wooden Fork

Wooden Knife

Wooden Dessert Spoon



Wooden Teaspoon

Wooden Gelato Spoon

Wooden Spork



Wooden Cutlery
ComboPak

CODE	DESCRIPTION	DIMENSIONS	MATERIAL	CARTON QTY	SLEEVE QTY
BE-WCUT-F	BetaEco TM Wooden Fork	160mm	Timber	1000	100
BE-WCUT-K	BetaEco TM Wooden Knife	165mm	Timber	1000	100
BE-WCUT-D	BetaEco TM Wooden Dessert Spoon	160mm	Timber	1000	100
BE-WCUT-T	BetaEco TM Wooden Teaspoon	110mm	Timber	1000	100
BE-WCUT-G	BetaEco TM Wooden Gelato Spoon	95mm	Timber	1000	100
BE-WCUT-S	BetaEco TM Wooden Spork	160mm	Timber	1000	100
BE-WCUTCP	BetaEco TM Wooden Cutlery ComboPak (Knife, Fork and Kraft Napkin)		Timber, Kraft	400	100

BetaEcoTM PSM Cutlery



PSM Fork



PSM Knife



PSM Spoon



PSM Cutlery Set

CODE	DESCRIPTION	DIMENSIONS	MATERIAL	CARTON QTY	SLEEVE QTY
BE-PSMCUT-F	BetaEco TM PSM Fork	180mm	Plant Starch	1000	50
BE-PSMCUT-K	BetaEco TM PSM Knife	185mm	Plant Starch	1000	50
BE-PSMCUT-S	BetaEco TM PSM Spoon	160mm	Plant Starch	1000	50
BE-PSMCUT-SET	BetaEco TM PSM Cutlery 3 in 1 SET (Knife, Fork, Napkin)		Plant Starch, Paper	500	Bulk

BetaEcoTM PLA Cutlery



PLA Fork



PLA Knife



PLA Spoon



PLA Tea Spoon

CODE	DESCRIPTION	MATERIAL	CARTON QTY	SLEEVE QTY
BE-CUTF	BetaEco TM PLA Fork	PLA	1000	50
BE-CUTK	BetaEco TM PLA Knife	PLA	1000	50
BE-CUTS	BetaEco TM PLA Spoon	PLA	1000	50
BE-CUTTS	BetaEco TM PLA Tea Spoon	PLA	1000	50
BE-CUTSET	BetaEco TM PLA Cutlery Pack (Knife, Fork, Napkin)	PLA, Paper	500	50



PLA Cutlery Set

Cutlery Packs



PLA Cutlery Pack



PSM Cutlery Pack



Wooden Cutlery ComboPak

CODE	DESCRIPTION	MATERIAL	CARTON QTY	SLEEVE QTY
BE-CUTSET	BetaEco TM PLA Cutlery Pack (Knife, Fork, Napkin)	PLA, Paper	500	50
BE-PSMCUT-SET	BetaEco TM PSM Cutlery Set (Knife, Fork, Napkin)	PSM, Paper	400	100
BE-WCUTCP	BetaEco TM Wooden Cutlery ComboPak (Knife, Fork, Kraft Napkin)	Timber, Paper	400	100
CUTMP108	Heavy Duty Clear Cutlery Pack (Knife, Fork, Spoon, 1 ply Napkin)	Plastic, Paper	250	Bulk
CUTMP104	Cutlery Pack (Knife, Fork, Spoon, Salt & Pepper Sachets, 1 ply Napkin)	Plastic, Paper	500	Bulk

BetaEcoTM Wooden Skewers



Wooden Skewer 100mm

CODE	DESCRIPTION	DIMENSIONS	MATERIAL	CARTON QTY	SLEEVE QTY
BE-WS100	BetaEco TM Wooden Skewer, 100mm	100mm length	Timber	10,000	100

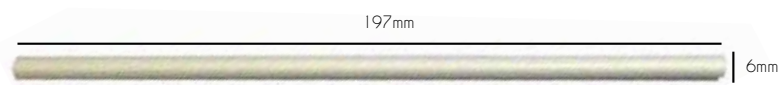
CATERPAK™

Paper Straws



Made from FSC® Certified paper, sustainable paper that performs.

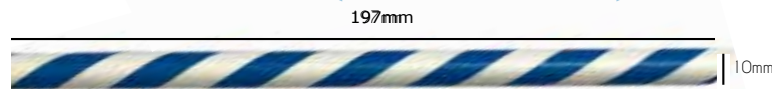
Regular Straws (6mm x 197mm)



Flexi Straws (6mm x 197mm)



Jumbo Straws (10mm x 197mm)



Cocktail Straws (5mm x 120mm)



Support the planet and switch
to Paper Straws!



Responsibly Sourced
Paper



Chemical and Plastic
Free



100% Compostable



Suitable for hot and
cold drinks



HACCP Accredited

Caterpak™ Regular Paper Straws



CODE	DESCRIPTION	DIMENSIONS	MATERIAL	CARTON QTY	SLEEVE QTY
CP-PSREG-RS	Caterpak™ Regular Paper Straw, Red Stripe	6mm x 197mm	Paper	2500	250
CP-PSREG-BS	Caterpak™ Regular Paper Straw, Blue Stripe	6mm x 197mm	Paper	2500	250
CP-PSREG-BLKS	Caterpak™ Regular Paper Straw, Black Stripe	6mm x 197mm	Paper	2500	250
CP-PSREG-BLK	Caterpak™ Regular Paper Straw, Black	6mm x 197mm	Paper	2500	250
CP-PSREG-WH	Caterpak™ Regular Paper Straw, White	6mm x 197mm	Paper	2500	250
CP-PSREG-RED	Caterpak™ Regular Paper Straw, Red	6mm x 197mm	Paper	2500	250
CP-PSREG-BLUE	Caterpak™ Regular Paper Straw, Blue	6mm x 197mm	Paper	2500	250
CP-PSREG-KFT	Caterpak™ Regular Paper Straw, Brown Kraft	6mm x 197mm	Paper	2500	250

Caterpak™ Flexi Paper Straws



CODE	DESCRIPTION	DIMENSIONS	MATERIAL	CARTON QTY	SLEEVE QTY
CP-PSFLEX-BLK	Caterpak™ Flexi Paper Straw, Black	6mm x 197mm	Paper	2500	250
CP-PSFLEX-WH	Caterpak™ Flexi Paper Straw, White	6mm x 197mm	Paper	2500	250
CP-PSFLEX-KFT	Caterpak™ Flexi Paper Straw, Brown Kraft	6mm x 197mm	Paper	2500	250
CP-PSWFLEX-BLK	Caterpak™ Wrapped Flexi Paper Straw, Black	6mm x 197mm	Paper	2500	250

Caterpak™ Jumbo Paper Straws



Jumbo Red Stripe



Jumbo Blue Stripe



Jumbo White

CODE	DESCRIPTION	DIMENSIONS	MATERIAL	CARTON QTY	SLEEVE QTY
CP-PSJUMBO-RS	Caterpak™ Jumbo Paper Straw, Red Stripe	10mm x 197mm	Paper	2500	250
CP-PSJUMBO-BS	Caterpak™ Jumbo Paper Straw, Blue Stripe	10mm x 197mm	Paper	2500	250
CP-PSJUMBO-WJH	Caterpak™ Jumbo Paper Straw, White	10mm x 197mm	Paper	2500	250

Caterpak™ Cocktail Paper Straws



Cocktail Black

CODE	DESCRIPTION	DIMENSIONS	MATERIAL	CARTON QTY	SLEEVE QTY
CP-PSCOCK-BLK	Caterpak™ Cocktail Paper Straw, Black	5mm x 120mm	Paper	2500	250

Caterpak™ PLA Straws



Made from Plant Based Material



100% Compostable



Chemical & Plastic Free



CODE	DESCRIPTION	DIMENSIONS	MATERIAL	CARTON QTY	SLEEVE QTY
CP-BIOS-REG-CL	Caterpak™ PLA Clear Regular Straw	6mm x 197mm	PLA	2000	100
CP-BIOS-JUMBO-CL	Caterpak™ PLA Clear Jumbo Straw	10mm x 200mm	PLA	2000	100

COFFEE CUPS

*Packaging made
from Plants*



EcoCup™ is not just a takeaway coffee cup. It stands for the future, made from responsibly sourced paper and lined with Ingeo™ bioplastic. A sustainable hot cup better for the planet.



Responsibly Sourced
Material



Custom Printing



100% Compostable



Hot and Cold
Friendly



HACCP Accredited

EcoCup™

Single Wall Coffee Cups



Commercially Compostable



Custom Branding



Paper from Managed Plantations



Non-toxic inks



Oil Free



Ingeo™ PLA Bioplastic



Renewable Resources



Hot content friendly



4oz EcoCup™



6oz EcoCup™



8oz (80mm) EcoCup™



8oz (90mm) EcoCup™



12oz EcoCup™



16oz EcoCup™

CODE	DESCRIPTION	DIAMETER	MATERIAL	CARTON QTY	SLEEVE QTY
EC-SW04W	EcoCup™ 60mm 4oz Single Wall White Coffee Cup	Ø 60mm	PLA	1000	50
EC-SW06W	EcoCup™ 80mm 6oz Single Wall White Coffee Cup	Ø 80mm	PLA	1000	50
EC-SW08W-80MM	EcoCup™ 80mm 8oz Single Wall White Coffee Cup	Ø 80mm	PLA	1000	50
EC-SW08W	EcoCup™ 90mm 8oz Single Wall White Coffee Cup	Ø 90mm	PLA	1000	50
EC-SW12W	EcoCup™ 90mm 12oz Single Wall White Coffee Cup	Ø 90mm	PLA	1000	50
EC-SW16W	EcoCup™ 90mm 16oz Single Wall White Coffee Cup	Ø 90mm	PLA	1000	50

Single Wall Paper Coffee Cups with PE Lining



Lined with Polyethylene (PE)



100% Recyclable



High Quality, Strong Insulation



Cups & matching lids to suit all takeaway coffees



Custom Printing



HACCP Accredited

CODE	DESCRIPTION	DIAMETER	MATERIAL	CARTON QTY	SLEEVE QTY
BE-SW04K	BetaEco™ 4oz 60mm Single Wall Coffee Cup, Kraft	Ø 60mm	Recycled Paper, PE	1000	50
BE-SW06K	BetaEco™ 6oz 80mm Single Wall Coffee Cup, Kraft	Ø 80mm	Recycled Paper, PE	1000	50
BE-SW08K	BetaEco™ 8oz 80mm Single Wall Coffee Cup, Kraft	Ø 80mm	Recycled Paper, PE	1000	50
BE-SW08K-90	BetaEco™ 8oz 90mm Single Wall Coffee Cup, Kraft	Ø 90mm	Recycled Paper, PE	1000	50
BE-SW12K	BetaEco™ 12oz 90mm Single Wall Coffee Cup, Kraft	Ø 90mm	Recycled Paper, PE	1000	50
BE-SW16K	BetaEco™ 16oz 90mm Single Wall Coffee Cup, Kraft	Ø 90mm	Recycled Paper, PE	1000	50



CODE	DESCRIPTION	DIAMETER	MATERIAL	CARTON QTY	SLEEVE QTY
BE-SW04B	BetaEco™ 4oz 60mm Single Wall Coffee Cup, Black	Ø 60mm	Recycled Paper, PE	1000	50
BE-SW06B	BetaEco™ 6oz 80mm Single Wall Coffee Cup, Black	Ø 80mm	Recycled Paper, PE	1000	50
BE-SW08B	BetaEco™ 8oz 80mm Single Wall Coffee Cup, Black	Ø 80mm	Recycled Paper, PE	1000	50
BE-SW08B-90	BetaEco™ 8oz 90mm Single Wall Coffee Cup, Black	Ø 90mm	Recycled Paper, PE	1000	50
BE-SW12B	BetaEco™ 12oz 90mm Single Wall Coffee Cup, Black	Ø 90mm	Recycled Paper, PE	1000	50
BE-SW16B	BetaEco™ 16oz 90mm Single Wall Coffee Cup, Black	Ø 90mm	Recycled Paper, PE	1000	50



CODE	DESCRIPTION	DIAMETER	MATERIAL	CARTON QTY	SLEEVE QTY
BE-SW04W	BetaEco™ 4oz 60mm Single Wall Coffee Cup, White	Ø 60mm	Recycled Paper, PE	1000	50
BE-SW06W	BetaEco™ 6oz 80mm Single Wall Coffee Cup, White	Ø 80mm	Recycled Paper, PE	1000	50
BE-SW08W	BetaEco™ 8oz 80mm Single Wall Coffee Cup, White	Ø 80mm	Recycled Paper, PE	1000	50
BE-SW08W-90	BetaEco™ 8oz 90mm Single Wall Coffee Cup, White	Ø 90mm	Recycled Paper, PE	1000	50
BE-SW12W	BetaEco™ 12oz 90mm Single Wall Coffee Cup, White	Ø 90mm	Recycled Paper, PE	1000	50
BE-SW16W	BetaEco™ 16oz 90mm Single Wall Coffee Cup, White	Ø 90mm	Recycled Paper, PE	1000	50



Smooth Double Wall Paper Coffee Cups with PE Lining



Kraft 4oz BetaEco™ Cup



Kraft 8oz BetaEco™ Cup



Kraft 12oz BetaEco™ Cup



Kraft 16oz BetaEco™ Cup



Black 8oz BetaEco™ Cup



Black 12oz BetaEco™ Cup



Black 16oz BetaEco™ Cup



White 8oz BetaEco™ Cup



White 12oz BetaEco™ Cup



White 16oz BetaEco™ Cup

CODE	DESCRIPTION	DIAMETER	MATERIAL	CARTON QTY	SLEEVE QTY
BE-SDW04K	BetaEco™ 60mm 4oz Smooth Double Wall Brown Kraft Coffee Cup	Ø 60mm	Recycled Paper, PE	1000	50
BE-SDW08K	BetaEco™ 90mm 8oz Smooth Double Wall Brown Kraft Coffee Cup	Ø 90mm	Recycled Paper, PE	500	50
BE-SDW12K	BetaEco™ 90mm 12oz Smooth Double Wall Brown Kraft Coffee Cup	Ø 90mm	Recycled Paper, PE	500	50
BE-SDW16K	BetaEco™ 90mm 16oz Smooth Double Wall Brown Kraft Coffee Cup	Ø 90mm	Recycled Paper, PE	500	50
BE-SDW08W	BetaEco™ 90mm Smooth Double Wall 8oz White Cup	Ø 90mm	Recycled Paper, PE	500	25
BE-SDW12W	BetaEco™ 90mm Smooth Double Wall 12oz White Cup	Ø 90mm	Recycled Paper, PE	500	25
BE-SDW16W	BetaEco™ 90mm Smooth Double Wall 16oz White Cup	Ø 90mm	Recycled Paper, PE	500	25
BE-SDW08BK	BetaEco™ 90mm Smooth Double Wall 8oz Black Cup	Ø 90mm	Recycled Paper, PE	500	25
BE-SDW12BK	BetaEco™ 90mm Smooth Double Wall 12oz Black Cup	Ø 90mm	Recycled Paper, PE	500	25
BE-SDW16BK	BetaEco™ 90mm Smooth Double Wall 16oz Black Cup	Ø 90mm	Recycled Paper, PE	500	25

BetaGrip™

Rippled Double Wall Coffee Cups

A convenient rippled finish to keep your hands cool and your drinks hot!



Kraft 4oz BetaGrip™ Cup

Kraft 8oz BetaGrip™ Cup

Kraft 12oz BetaGrip™ Cup

Kraft 16oz BetaGrip™ Cup



Black 4oz BetaGrip™ Cup

Black 8oz BetaGrip™ Cup

Black 12oz BetaGrip™ Cup

Black 16oz BetaGrip™ Cup

CODE	DESCRIPTION	DIAMETER	MATERIAL	CARTON QTY	SLEEVE QTY
APBG04BK	BetaGrip™ 60mm 4oz Black Coffee Cup	Ø 60mm	Paper	500	25
APBG04KR	BetaGrip™ 60mm 4oz Brown Kraft Coffee Cup	Ø 60mm	Paper	500	25
APBG08BK	BetaGrip™ 80mm 8oz Black Coffee Cup	Ø 80mm	Paper	500	25
APBG08KR	BetaGrip™ 80mm 8oz Brown Kraft Coffee Cup	Ø 80mm	Paper	500	25
APBG12BK	BetaGrip™ 90mm 12oz Black Coffee Cup	Ø 90mm	Paper	500	25
APBG12KR	BetaGrip™ 90mm 12oz Brown Kraft Coffee Cup	Ø 90mm	Paper	500	25
APBG16BK	BetaGrip™ 90mm 16oz Black Coffee Cup	Ø 90mm	Paper	500	25
APBG16KR	BetaGrip™ 90mm 16oz Brown Kraft Coffee Cup	Ø 90mm	Paper	500	25

Wooden Coffee Stirrers



CODE	DESCRIPTION	DIMENSIONS	MATERIAL	CARTON QTY	SLEEVE QTY
CPWS	Caterpak Wooden Stirrers 110mm	110mm x 10mm	Wood	10,000	1000

Carry Cup Trays

Avoid unnecessary spills and mess!

Choose from a variety of high quality carry cup trays designed to offer your customers convenience when carrying more than 1 drink. Suitable for hot and cold drinks such as coffee, juices, smoothies, etc.



2 Cup Carry Tray



4 Cup Carry Tray



4 Cup Carry Tray



Black PET 4 Cup Carry Tray

CODE	DESCRIPTION	DIMENSIONS	MATERIAL	CARTON QTY	SLEEVE QTY
AP2EBCT	2 Cup Egg Board Carry Tray	225mm x 115mm x 45mm	Egg Board	200	50
AP4EBCT/200	4 Cup Egg Board Carry Tray	225mm x 225mm x 45mm	Egg Board	200	50
AP4CT	4 Cup Cardboard Carry Tray	290mm x 175mm x 37mm	Cardboard	100	Bulk
AP4PETCT	Black PET 4 Cup Carry Tray	180mm x 180mm x 55mm	PET	200	100



Mix & Match our Lids and Coffee cups.

Our comprehensive range of coffee cups and lids offer reliability, functionality and sustainability to Cafes & Coffee Shops.

4oz

4oz (60mm) Lids



Recyclable 60mm Lids

CODE	DESCRIPTION	DIAMETER	MATERIAL	CARTON QTY	SLEEVE QTY
EW-R04WLID	Ecoware™ 4oz Coffee Cup Lid, White	Ø 60mm	PS	1000	50
EW-R04BLID	Ecoware™ 4oz Coffee Cup Lid, Black	Ø 60mm	PS	1000	50

6oz
& 8oz

6oz & 8oz (80mm)



Recyclable 80mm Lids

Compostable 80mm Lids

CODE	DESCRIPTION	DIAMETER	MATERIAL	CARTON QTY	SLEEVE QTY
BE-RPS80LB	Recyclable Black 80mm Lid	Ø 80mm	PS	1000	50
BE-RPS80LW	Recyclable White 80mm Lid	Ø 80mm	PS	1000	50
EW-PLA80-CL	Compostable White 80mm Lid	Ø 80mm	PLA	1000	50
EW-PLA80-CL-BK	Compostable Black 80mm Lid	Ø 80mm	PLA	1000	50



8oz,
12oz &
16oz

8oz - 16oz (90mm)



Recyclable 90mm Lids



Compostable 90mm Lids

CODE	DESCRIPTION	DIAMETER	MATERIAL	CARTON QTY	SLEEVE QTY
BE-RPS90LW	Recyclable White 90mm Lid	Ø 90mm	PS	1000	50
BE-RPS90LB	Recyclable Black 90mm Lid	Ø 90mm	PS	1000	50
EW-PLA-CL	Ecovare™ Compostable 8oz & 16oz Coffee Cup Lid, White	Ø 90mm	PLA	1000	50
EW-PLA-CL-BK	Ecovare™ Compostable 8oz & 16oz Coffee Cup Lid, Black	Ø 90mm	PLA	1000	50

Ecoware™

PLA Cups



Ecoware's clear disposable cups look and perform like traditional plastic, but are made entirely from plants. Mind blown? Don't worry. You're not the only one. Made from the revolutionary Ingeo™ bioplastic, clear cold cups are a sustainable option that maintains exceptional performance.

Sturdy & robust

The Ingeo™ bioplastic used to make our clear cups and lids is specifically developed to provide physical and functional properties ideal for cold food and beverages.

Lower carbon footprint

Ingeo™ bioplastic provides a significantly lower carbon footprint than the traditional oil-based polymers it replaces. This is because the manufacture of Ingeo™ emits up to 80% fewer greenhouse gases (GHGs) than the comparable manufacture of common oil based plastic like polystyrene (PS) and polyethylene (PET)^[1].

Certified Compostable

Our cold EcoCups and lids are certified for commercial composting, meaning in a commercial environment where optimal conditions are maintained, these products will break down in 90 days. Learn more about composting on our website.

Secure fit

Our lids are a secure fit, especially for cold clear cups.



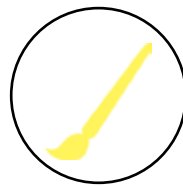
Responsibly Sourced Material



100% Commercially Compostable



Suitable for cold drinks



Custom Printing



High Clarity



HACCP Accredited

[1] Life Cycle Inventory and Impact Assessment data for 2014 Ingeo™ Polylactide Production. Industrial Biotechnology, June 2015.

EcoCup™ PLA Clear Cups



PLA Stemless Clear Wine Cup



360ml PLA Clear Cup



500ml PLA Clear Cup



Dome Lid



Flat Lid

CODE	DESCRIPTION	DIMENSIONS	MATERIAL	CARTON QTY	SLEEVE QTY
HFQ-360	EcoCup™ 360ml PLA Stemless Clear Wine Cup	Ø 96mm x Ø B47mm x H83mm	PLA	1000	50
HFR-S500	EcoCup™ 500ml PLA Clear Cup	Ø 96mm x Ø B54mm x H107mm	PLA	1000	50
HFR-S360	EcoCup™ 360ml PLA Clear Cup	Ø 96mm x Ø B62mm x H124mm	PLA	1000	50
HFR-DB96	EcoCup™ Dome Lid to suit above	Ø 96mm	PLA	1000	50
HFR-C96	EcoCup™ Flat Lid to suit above	Ø 96mm	PLA	1000	50



BETAECO™ PET 'Green' Cups



10oz 'Green' PET Cup



12/14oz 'Green' PET Cup



16oz 'Green' PET Cup



20oz 'Green' PET Cup



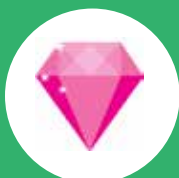
24oz 'Green' PET Cup

CODE	DESCRIPTION	DIMENSIONS	MATERIAL	CARTON QTY	SLEEVE QTY
BE-PETG10	BetaEco™ 10oz PET 'Green' Cup	78mm x 102mm	PET	1000	50
BE-PETG12/14	BetaEco™ 12/14oz PET 'Green' Cup	98mm x 54mm x 100mm	PET	1000	50
BE-PETG16	BetaEco™ 16oz PET 'Green' Cup	98mm x 63mm x 121mm	PET	1000	50
BE-PETG20	BetaEco™ 20oz PET 'Green' Cup	98mm x 58mm x 136mm	PET	1000	50
BE-PETG24	BetaEco™ 24oz PET 'Green' Cup	98mm x 59mm x 157mm	PET	600	50

Make sure your customers know you are serious about Recycling.



100% Recyclable



High Clarity



Suitable for cold food



Custom Printing



Strong & Durable



HACCP Accredited

BETAPET™ Cups & Lids



10oz PET Cup



12/14oz PET Cup



16oz PET Cup



20oz PET Cup



24oz PET Cup



Flat Lid for
10oz PET Cups



Dome Lid for
10oz PET Cup



Flat Lid for
12 - 24oz PET Cups



Dome Lid for
12 - 24oz PET Cups



Strawless Sipper Lid for
12 - 24oz PET Cups

NEW



425ml Cup



Black PET 4 Cup Carry Tray

CODE	DESCRIPTION	DIMENSIONS	MATERIAL	CARTON QTY	SLEEVE QTY
AP-BPET10	BetaPET™ 10oz Cup	78mm x 102mm	PET	1000	50
AP-BPETFLS	BetaPET™ Flat Lid to suit 10oz Cup	Ø 78mm	PET	1000	50
AP-BPETDLS	BetaPET™ Dome Lid to suit 10oz Cup	Ø 78mm	PET	1000	50
AP-BPET12/14	BetaPET™ 12/14oz Cup	98mm x 54mm x 100mm	PET	1000	50
AP-BPET16	BetaPET™ 16oz Cup	98mm x 63mm x 121mm	PET	1000	50
AP-BPET20	BetaPET™ 20oz Cup	98mm x 58mm x 136mm	PET	1000	50
AP-BPET24	BetaPET™ 24oz Cup	98mm x 59mm x 157mm	PET	600	50
AP-BPETFL	BetaPET™ Flat Lid to suit 12oz - 24oz Cups	Ø 98mm	PET	1000	50
AP-BPETDL	BetaPET™ Dome Lid to suit 12oz - 24oz Cups	Ø 98mm	PET	1000	50
AP-BPETSSLL	BetaPET™ Strawless Sipper Lid to suit 12oz - 24oz Cups	Ø 98mm	PET	1000	50
AP-BPET425WM	BetaPET™ 425ml Weights & Measured Approved Cup	90mm x 56mm x 115mm	PET	1000	20
AP4PETCT	Black PET 4 Cup Carry Tray	180mm x 180mm x 55mm	PET	200	100

Styrene Glassware Range



High clarity Styrene glassware is a safe alternative to real glass which can shatter and cause harm in environments where alcohol is served.



135ml Clear Champagne Flute



125ml Champagne Flute with Black Base



125ml Stemmed Wine Glass with Black Base



220ml Cocktail Glass with Gold Base



65ml Wine Taster



185ml Wine Glass



200ml Clear Tumbler



425ml Stadium Cup

CODE	DESCRIPTION	DIMENSIONS	MATERIAL	CARTON QTY	SLEEVE QTY
CH40WT65	65ml Wine Taster	49mm x 62mm	Styrene	1000	10
DCF135	135ml Clear Champagne Flute with Plimsol Line to 135ml	50mm x 196mm	Polystyrene	100	10
CH40GWG200	150ml Stemmed Wine Glass with Clear Base	74mm x 145mm	CP Styrene	100	10
CH40GMG200	150-190ml Margarita Glass	88mm x 106mm	CP Styrene	100	10
CH40CGG200	170ml-200ml Cocktail Glass with Clear Base	100mm x 130mm	CP Styrene	100	10
CH40WG170	170ml Wine Goblet	67mm x 83mm	Styrene	250	10
RGO15	65ml Wine Taster	39mm x 46mm x 65mm	CP Styrene	1000	20
RCO55BL	125ml Champagne Flute with Black with Gold or Silver Base	67mm x 59mm x 166mm	CP Styrene	100	10
RGO30BL	125ml Stemmed Wine Glass with Black, Gold or Silver Base	67mm x 78mm x 117mm	CP Styrene	100	10
RGO2550	185ml Wine Glass	57mm x 68mm x 90mm	CP Styrene	500	10
RTO35	200ml Clear Tumbler	47mm x 63mm x 95mm	CP Styrene	250	25
RCO60	220ml Cocktail Glass with Black or Silver Base	67mm x 100mm x 128mm	CP Styrene	100	10
RSC15	425ml Stadium Cup	60mm x 87mm x 112mm	Polystyrene	250	25

Polypropylene Cups



200ml Cup



285ml Cup



350ml Cup



540ml Cup

CODE	DESCRIPTION	DIMENSIONS	MATERIAL	CARTON QTY	SLEEVE QTY
APPP200	200ml Clear PP Cup (Weights & Measures Approved)	88mm x 50mm x 80mm	PP	1000	50
APPP225	225ml Clear PP Cup	83mm x 50mm x 90mm	PP	1000	50
APPP285	285ml Clear PP Cup (Weights & Measures Approved)	83mm x 50mm x 102mm	PP	1000	50
APPP350	350ml Clear PP Cup	83mm x 50mm x 110mm	PP	1000	50
APPP425	425ml Clear PP Cup (Weights and Measures Approved)	93mm x 60mm x 107mm	PP	1000	50
APPP540	540ml Clear PP Cup	93mm x 60mm x 130mm	PP	1000	50
APPPSFL	Small Flat Lid for 225, 285 & 350ml PP Cups	Ø 83mm x 10mm	PP	1000	50
APPPSDL	Small Dome Lid for 225, 285 & 350ml PP Cups	Ø 83mm x 38mm	PP	1000	50
APPPLFL	Large Flat Lid for 425 & 540 PP Cups	Ø 93mm x 10mm	PP	1000	50
APPPLDL	Large Dome Lid for 425, & 540 PP Cups	Ø 93mm x 42mm	PP	1000	50

Water Cup

CODE	DESCRIPTION	DIMENSIONS	MATERIAL	CARTON QTY	SLEEVE QTY
CP-6WC	Caterpak™ White 200ml (6oz) Water Cup	Ø 70mm x 85mm	Plastic	1000	50



Water Cup

FOOD WRAPS

Foil, Cling Wrap, Baking Paper,
Greaseproof Paper,
Miler Film & Dispensers



Ideal for use in
commercial kitchens



Strong & Durable



Suitable for hot and
cold food



HACCP Accredited

Biodegradable Food Packaging Cling Film

*Biodegrades in Landfill
& keeps your food fresh!*



33cm Bio Cling Film



45cm Bio Cling Film

CODE	DESCRIPTION	DIMENSIONS	MATERIAL	CARTON QTY
BE-33D	BioFresh 33cm x 600m Food Packaging Film Dispenser	33cm x 600m	Biodegradable Catering Film Formulation	6
BE-45D	BioFresh 45cm x 600m Food Packaging Film Dispenser	45cm x 600m	Biodegradable Catering Film Formulation	6

CaterWrap™ Caterers Foil



30cm All Purpose Caterers Foil



45cm All Purpose Caterers Foil



45cm Premium Caterers Foil

CODE	DESCRIPTION	DIMENSIONS	MATERIAL	CARTON QTY
APAPF30	Caterwrap™ All Purpose Caterers Foil, 30cm	30cm x 150m, 11um thickness	Aluminium	6
APAPF45	Caterwrap™ All Purpose Caterers Foil, 45cm	45cm x 150m, 11um thickness	Aluminium	6
APPF45	Caterwrap™ Premium Caterers Foil, 45cm	45cm x 150m 13um thickness	Aluminium	6

CaterWrap™ Cling Film



33cm Cling Film



45cm Cling Film

CODE	DESCRIPTION	DIMENSIONS	MATERIAL	CARTON QTY
CP33D	Caterwrap™ Premium Cling Film, 33cm	33cm x 600m	PVC	6
CP45D	Caterwrap™ Premium Cling Film, 45cm	45cm x 600m	PVC	6

BetaBake™ Baking Paper & Greaseproof Paper



30cm Baking Paper



40cm Baking Paper



30cm Greaseproof Paper

CODE	DESCRIPTION	DIMENSIONS	MATERIAL	CARTON QTY
BB30	BetaBake™ Premium non-stick Baking Paper, 30cm	30cm x 120m	Paper	4
BB40	BetaBake™ Premium non-stick Baking Paper, 40cm	40cm x 120m	Paper	4
BBWGR12	BetaBake™ Greaseproof Paper, 30cm	30cm x 120m	Greaseproof Paper	4

Miler Film & Dispensers

*Order 6 Miler Films and receive a Free Dispenser.

CODE	DESCRIPTION	DIMENSIONS	MATERIAL	CARTON QTY
MF12	12" Miler Film	30cm x 1610m	PVC	1
MF18	18" Miler Film	45cm x 1610m	PVC	1
MF24	24" Miler Film	61cm x 1610m	PVC	1
MD12	12" Miler Dispenser	30cm	Stainless Steel	1
MD18	18" Miler Dispenser	45cm	Stainless Steel	1
MD24	24" Miler Dispenser	61cm	Stainless Steel	1



Miler Film & Dispenser

WASHROOM PRODUCTS



We have carefully selected our range of washroom products for their quality, efficiency and sustainability.

Let us service all of your janitorial requirements.



Responsibly Sourced
Material



Strong & Durable
Products



HACCP Accredited

Caterpak™ Paper Towels & Toilet Paper



Compact Folded Hand Towel



Ultra Slim Folded Hand Towel



Slim Folded Hand Towel



Facial Tissues



Toilet Paper

CODE	DESCRIPTION	DIMENSIONS	MATERIAL	CARTON QTY	SLEEVE QTY
CP-HTC	Caterpak™ Compact Fold Hand Towel	20cm x 25cm	Recycled Paper	2400	20 packs
CP-HTUS	Caterpak™ Ultra Slim Fold Hand Towel	24cm x 24cm	Recycled Paper	2400	16 packs
CP-HTS	Caterpak™ Slim Fold Hand Towel	24cm x 23cm	Recycled Paper	4000	20 packs
TCFT100	Town & Country™ 2ply Facial Tissues 100's	20cm x 25cm	Recycled Paper	4800	48 packs
TC400W	Town & Country™ 2 Ply Toilet Paper	100mm x 100mm	Recycled Paper	48	Bulk

CaterPak™ Paper Towels & Toilet Paper



Hand Towel



Jumbo Toilet Paper

CODE	DESCRIPTION	DIMENSIONS	MATERIAL	CARTON QTY	SLEEVE QTY
CPR80	Caterpak™ 80 Metre Hand Towel Roll	80m	Virgin Paper	16	Bulk
CPTRJ300	Caterpak™ Jumbo Toilet Paper 2 ply	300m	Recycled Paper	8	Bulk

Recycled Brown Kraft Hand Towels



Compact Folded Hand Towel



Ultra Slim Folded Hand Towel



Slim Folded Hand Towel



80m Roll Towel

CODE	DESCRIPTION	DIMENSIONS	MATERIAL	CARTON QTY	SLEEVE QTY
BE-BKHTC	BetaEco™ Brown Kraft Compact Fold Hand Towel	20cmx25cm	Recycled Paper	2400	20 packs
BE-BKHTUS	BetaEco™ Brown Kraft Ultra Slim Folded Hand Towel	24cmx24cm	Recycled Paper	2400	16 packs
BE-BKHTS	BetaEco™ Brown Kraft Slim Folded Hand Towel	24cmx23cm	Recycled Paper	4000	20 packs
BE-BKRT80	BetaEco™ Brown Kraft Roll Towel 80m	80m	Recycled Paper	16 rolls	Bulk

Kitchen Wipes

Maintaining a clean and hygienic kitchen environment is critical. Our Heavy Duty wipes with antibacterial properties are ideal to clean up mess, food scrap and liquid spills in any commercial kitchen.



CODE	DESCRIPTION	DIMENSIONS	MATERIAL	CARTON QTY	SLEEVE QTY
CP-HDBW	Caterpak™ Heavy Duty Wipes - Blue	30cm x 50cm - 45 metres (90 sheets per roll)	Perforated Open Weave Cloth	6	Bulk
CP-HDGW	Caterpak™ Heavy Duty Wipes - Green	30cm x 50cm - 45 metres (90 sheets per roll)	Perforated Open Weave Cloth	6	Bulk
CP-HDBRW	Caterpak™ Heavy Duty Wipes - Brown	30cm x 50cm - 45 metres (90 sheets per roll)	Perforated Open Weave Cloth	6	Bulk
CP-HDRW	Caterpak™ Heavy Duty Wipes - Red	30cm x 50cm - 45 metres (90 sheets per roll)	Perforated Open Weave Cloth	6	Bulk
CP-HDYW	Caterpak™ Heavy Duty Wipes - Yellow	30cm x 50cm - 45 metres (90 sheets per roll)	Perforated Open Weave Cloth	6	Bulk
CP-ESAPBW	Caterpak™ EcoSaver All Purpose Wipes - Blue	30cm x 50cm - 45 metres (90 sheets per roll)	Perforated Open Weave Cloth	10	Bulk

CATERPAK™

Oxo-Biodegradable Garbage bags



Our Bin Liners are made from Oxo-Biodegradable material, which means they will breakdown in Landfill!



Bin Liners



82 Litre Extra Heavy Duty Garbage Bags

CaterPak™

Oxo-Biodegradable Bin Liners & Garbage Bags

CODE	DESCRIPTION	DIMENSIONS	MATERIAL	CARTON QTY	SLEEVE QTY
CPHD75LT	CaterPak™ Oxo-Biodegradable 75-82 Litre Heavy Duty Bin Liner	920mm x 760mm	Oxo-Bio LDPE	250	25
CPEHD82LT-FP	CaterPak™ Oxo-Biodegradable 82 Litre Extra Heavy Duty Bin Liner	1020mm x 720mm	Oxo-Bio LDPE	250	25
CP-HDBL120LT	CaterPak™ Oxo-Biodegradable 120 Litre Heavy Duty Bin Liner	1100mm x 950mm	Oxo-Bio LDPE	125	25
CP-HDBL240LT	CaterPak™ Oxo-Biodegradable 240 Litre Heavy Duty Bin Liner	1450mm x 1140mm	Oxo-Bio HDPE	125	25
CP-EHD82LT	Caterpak™ Qik-Pik Oxo-Biodegradable 82 Litre Extra Heavy Duty Garbage Bags	780mm x 1020mm	Oxo-Bio HDPE	100	Bulk
CPHD82LT-SP	Caterpak™ SlimPik Oxo-Biodegradable 82 Litre Heavy Duty Garbage Bags	810mm x 950mm	Oxo-bio LDPE	300	100



CATERPAK™

Premium Vinyl Gloves



- ▶ Food Grade
- ▶ Non-Sterile
- ▶ Available in Low Powder or Powder Free
- ▶ Ideal for food service, food preparation and general cleaning purposes
- ▶ Protects against the spread of germs and bacteria



Vinyl Gloves



Ideal for use in commercial kitchens



Strong Protection against germs



Suitable for hot and cold food handling



HACCP Accredited

CaterPak™ Premium Clear Powder Free Gloves



Small Powder Free Gloves



Medium Powder Free Gloves



Large Powder Free Gloves



Extra Large Powder Free Gloves

CODE	DESCRIPTION	MATERIAL	CARTON QTY	SLEEVE QTY
CP-GLPF-S	Premium Small Clear Powder Free Gloves	Vinyl	1000 (10 packs)	100 per pack
CP-GLPF-M	Premium Medium Clear Powder Free Gloves	Vinyl	1000 (10 packs)	100 per pack
CP-GLPF-L	Premium Large Clear Powder Free Gloves	Vinyl	1000 (10 packs)	100 per pack
CP-GLPF-XL	Premium Extra Large Clear Powder Free Gloves	Vinyl	1000 (10 packs)	100 per pack

CaterPak™ Premium Blue Powder Free Gloves



Small Blue Powder Free Gloves



Medium Blue Powder Free Gloves



Large Blue Powder Free Gloves



Extra Large Blue Powder Free Gloves

CODE	DESCRIPTION	MATERIAL	CARTON QTY	SLEEVE QTY
CP-GLPF-SB	Premium Small Blue Powder Free Gloves	Vinyl	1000 (10 packs)	100 per pack
CP-GLPF-MB	Premium Medium Blue Powder Free Gloves	Vinyl	1000 (10 packs)	100 per pack
CP-GLPF-LB	Premium Large Blue Powder Free Gloves	Vinyl	1000 (10 packs)	100 per pack
CP-GLPF-XLB	Premium Extra Large Blue Powder Free Gloves	Vinyl	1000 (10 packs)	100 per pack

CaterPak™ Premium Clear Low Powder Gloves



Small Low Powder Gloves



Medium Low Powder Gloves



Large Low Powder Gloves



Extra Large Low Powder Gloves

CODE	DESCRIPTION	MATERIAL	CARTON QTY	SLEEVE QTY
CP-GLLP-S	Premium Small Clear Low Powder Gloves	Vinyl	1000 (10 packs)	100 per pack
CP-GLLP-M	Premium Medium Clear Low Powder Gloves	Vinyl	1000 (10 packs)	100 per pack
CP-GLLP-L	Premium Large Clear Low Powder Gloves	Vinyl	1000 (10 packs)	100 per pack
CP-GLLP-XL	Premium Extra Large Clear Low Powder Gloves	Vinyl	1000 (10 packs)	100 per pack

betaTMleaf



Dinnerware made from real leaves

This elegant and sustainable range of plates and bowls have been created solely from unused palm leaves and water. The range is 100% natural and created without any chemical coatings.

These durable products are microwave and oven safe, and can handle hot and cold foods, liquids and oils. They are certified compostable in fewer than 60 days in an industrial facility.



Made entirely from fallen leaves



Microwave and Oven safe



100% Compostable



Suitable for hot and cold food



HACCP Accredited



BetaLeaf™

Palm Leaf Plates & Bowls



6"x6" Plate



8"x8" Plate



9"x9" Plate



9" Round Plate



7" Round Bowl

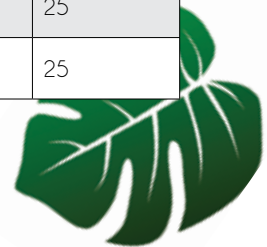


200mm Oval Plate



250mm Oval Plate

CODE	DESCRIPTION	DIMENSIONS	MATERIAL	CARTON QTY	SLEEVE QTY
BL-SQPLT6X6	BetaLeaf™ 6x6" Square Plate	150mm x 150mm	Palm leaf	100	25
BL-SQPLT8X8	BetaLeaf™ 8x8" Square Plate	200mm x 200mm	Palm leaf	100	25
BL-SQPLT9X9	BetaLeaf™ 9x9" Square Plate	230mm x 230mm	Palm leaf	100	25
BL-RPLATE9	BetaLeaf™ 9" Round Plate	230mm Ø	Palm leaf	100	25
BL-RBOWL7	BetaLeaf™ 7" Round Bowl	180mm Ø	Palm leaf	100	25
BL-OPLT200	BetaLeaf™ Oval plate Small (irregular) 200mm	200mm	Palm leaf	100	25
BL-OPLT250	BetaLeaf™ Oval plate Large (irregular) 250mm	250mm	Palm leaf	100	25



CATERING

Platters



- Timeless
- Superior
- Reusable

A huge range of platters and lids available in multiple sizes and shapes, provide catering and food service companies with a convenient solution for serving, displaying and transporting foods to and from events.



100% Recyclable
Bases and Lids



Suitable for hot and
cold food



Strong & Durable



Reusable



HACCP Accredited

12" Platters



12" Square Platters

12" Rectangular Platters



12" Round Platters

CODE	DESCRIPTION	DIMENSIONS	MATERIAL	CARTON QTY	SLEEVE QTY
APSP12SQB	Anchor Packaging 12" Square Black Platter	303mm x 303mm x 20mm	PP	40	10
APSP12SQW	Anchor Packaging 12" Square White Platter	303mm x 303mm x 20mm	PP	40	10
APSP12SQLID	Anchor Packaging Clear Lid to suit 12" Square Platters	320mm x 320mm x 65mm	PVC	40	10
APCP12RND	Anchor Packaging 12" 6 compartment Black Platter	∅ 303mm x 33mm	PP	40	10
APSP12RNDLID	Anchor Packaging Clear Lid to suit 12" Round Platters	∅ 324mm x 40mm	PVC	40	10
APSP12RB	Anchor Packaging 12" Rectangular Black Platter	304mm x 228mm x 21mm	PP	40	10
APSP12RW	Anchor Packaging 12" Rectangular White Platter	304mm x 228mm x 21mm	PP	40	10
APSP12RLID	Anchor Packaging Clear Lid to suit 12" Rectangular Platters	324mm x 245mm x 64mm	PVC	40	10

15" Platters



15" Platters

CODE	DESCRIPTION	DIMENSIONS	MATERIAL	CARTON QTY	SLEEVE QTY
APSP15RND	Anchor Packaging 15" Black Round Platter	∅ 384mm x 35mm	PVC	40	10
APCP15RND	Anchor Packaging 15" 6 Compartment Black Round Platter	∅ 382mm x 38mm	PVC	40	10
APSP15RNDLID	Anchor Packaging Clear Lid to suit 15" Round Platters	∅ 405mm x 48mm	PVC	40	10

16" Platters



16" Oval Platters



16" Square Platters

CODE	DESCRIPTION	DIMENSIONS	MATERIAL	CARTON QTY	SLEEVE QTY
APSP16OVB	Anchor Packaging 16" Black Oval Platter	400mm x 280mm x 30mm	PP	40	10
APSP16OVW	Anchor Packaging 16" White Oval Platter	400mm x 280mm x 30mm	PP	40	10
APSP16OVLID	Anchor Packaging Lid to suit 16" Oval Platters	420mm x 300mm x 63mm	PVC	40	10
APSP16SQB	Anchor Packaging 16" Black Square Platter	405mm x 405mm x 35mm	PP	40	10
APSP16SQW	Anchor Packaging 16" White Square Platter	405mm x 405mm x 35mm	PP	40	10
APSP16SQLID	Anchor Packaging Lid to suit 16" Square Platters	425mm x 425mm x 65mm	PVC	40	10

20" Platters



20" Oval Platters

CODE	DESCRIPTION	DIMENSIONS	MATERIAL	CARTON QTY	SLEEVE QTY
APSP20B	Anchor Packaging 20" Black Oval Platter	497mm x 330mm x 35mm	PP	40	10
APSP20W	Anchor Packaging 20" White Oval Platter	497mm x 330mm x 35mm	PP	40	10
APSP20LID	Anchor Packaging Clear Lid to suit 20" Oval Platter	517mm x 358mm x 65mm	PVC	40	10

22" Platters



22" Platters

CODE	DESCRIPTION	DIMENSIONS	MATERIAL	CARTON QTY	SLEEVE QTY
APSP22RB	Anchor Packaging 22" Black Rectangular Platter	558mm x 230mm x 24mm	PP	40	10
APSP22RW	Anchor Packaging 22" White Rectangular Platter	558mm x 230mm x 24mm	PP	40	10
APSP22RLID	Anchor Packaging Clear Lid to suit 22" Rectangular Platters	573mm x 250mm x 65mm	PVC	40	10

Sandwich Wedges

Open Sandwich Wedges



Standard Sandwich Wedge



Standard Sandwich Wedge, Thicker



Large Wide Sandwich Wedge



Medium Sandwich Wedge



Wide Sandwich Wedge

CODE	DESCRIPTION	DIMENSIONS	MATERIAL	CARTON QTY
AP101	Standard Open Sandwich Wedge, Clear	165mm x 90mm x 75mm	PVC	1500
AP101C	Standard Open Sandwich Wedge with thicker wall, Clear	165mm x 90mm x 75mm	PVC	1000
AP101L	Large Wide Open Sandwich Wedge, Clear	180mm x 95mm x 95mm	PVC	1000
ALES3	Medium Open Sandwich Wedge, Clear	185mm x 80mm x 82mm	PVC	1250
ALES9	Wide Open Sandwich Wedge, Clear	122mm x 190mm x 85mm	PVC	800

LockTop Clear Sandwich Wedge



2-Point Sandwich Wedge



3-Point Sandwich Wedge



Deluxe Sandwich Wedge



4-Point Sandwich Wedge

CODE	DESCRIPTION	DIMENSIONS	MATERIAL	CARTON QTY	SLEEVE QTY
LTPP1	LockTop Small/Standard 2 Point Sandwich Wedge	167mm x 71mm x 80mm	PVC	500	Bulk
LTPP5	LockTop Medium 3 Point Sandwich Wedge	75mm x 145mm x 65mm	PVC	1000	Bulk
APLTPP6	LockTop Gourmet/Deluxe Sandwich Wedge	332mm x 84mm x 70mm	PVC	500	100
LTPP7	LockTop 4-Point Sandwich Wedge Pack	138mm x 140mm x 63mm	PVC	500	100

Sandwich Wedges from Other Ranges



CODE	DESCRIPTION	DIMENSIONS	MATERIAL	CARTON QTY	SLEEVE QTY
APBBWSW	BetaBoard™ Sandwich Wedge	120mm x 73mm x 120mm	Brown Kraft	500	100

BetaEco™

Recycled PET

Tamper Evident Containers

BUT-N-LOC.
PATENTED BUTTON LOCK DESIGN



Post Consumer Recycled PET (rPET)

These containers are made from post-consumer recycled PET (rPET) to provide environmental benefits and meet customer demand for more sustainable food packaging. RPET plastic provides crystal clear clarity, enhances the look of product and increasing odds of impulse purchasing.

Superior

Unlike other containers that require a plastic tear-off strip, our container has no external pieces to throw away which makes for safer and smoother handling. The lock button tab fastens the top to the base of the container.

Uses

Tamper Evident containers are perfect for packaging a wide variety of products including cold pasta, fruit salad, leafy green salad, sandwiches, nuts, snack mixes, candy, desserts, and more. Ideal for delis, supermarkets and wholesale.



100% Post Consumer Recycled Material



Suitable for cold food



Strong & Durable



Reusable



HACCP Accredited

BETAECO™

Recycled PET Tamper Evident Containers



8oz Container

12oz Container

16oz Container

Sandwich Wedge

20oz Container

24oz Container

32oz Container

48oz Container

64oz Container

CODE	DESCRIPTION	DIMENSIONS	MATERIAL	CARTON QTY
TE-HLR08	BetaEco™ Recycled PET Tamper Evident 8oz	600mm x 370mm x 280mm	RPET	240
TE-HLR12	BetaEco™ Recycled PET Tamper Evident 12oz	600mm x 380mm x 280mm	RPET	240
TE-HLR16	BetaEco™ Recycled PET Tamper Evident 16oz	600mm x 390mm x 280mm	RPET	240
TE-HLR20	BetaEco™ Recycled PET Tamper Evident 20oz	605mm x 395mm x 345mm	RPET	200
TE-HLR24	BetaEco™ Recycled PET Tamper Evident 24oz	600mm x 395mm x 370mm	RPET	200
TE-HLR32	BetaEco™ Recycled PET Tamper Evident 32oz	600mm x 395mm x 380mm	RPET	200
TE-HLR48	BetaEco™ Recycled PET Tamper Evident 48oz	455mm x 425mm x 470mm	RPET	134
TE-HLR64	BetaEco™ Recycled PET Tamper Evident 64oz	475mm x 425mm x 470mm	RPET	134
TE-HLRSW	BetaEco™ Tamper Evident Sandwich	525mm x 395mm x 360mm	RPET	250



Cold Containers & Lids

BETAPET™ Deli Containers & Lids



CODE	DESCRIPTION	DIMENSIONS	MATERIAL	CARTON QTY	SLEEVE QTY
AP-BPETDC08	BetaPET™ 8oz Deli Container	117mm x 95mm x 43mm	PET	500	50
AP-BPETDC12	BetaPET™ 12oz Deli Container	117mm x 95mm x 61mm	PET	500	50
AP-BPETDC16	BetaPET™ 16oz Deli Container	117mm x 92mm x 75mm	PET	500	25
AP-BPETDC24	BetaPET™ 24oz Deli Container	117mm x 88mm x 105mm	PET	500	25
AP-BPETDC32	BetaPET™ 32oz Deli Container	117mm x 83mm x 141mm	PET	500	25
AP-BPETDCIL	BetaPET™ Flat Inside Lid for Deli Containers	Ø 117mm	PET	500	50
AP-BPETDCOL	BetaPET™ Flat Outside Lid for Deli Containers	Ø 118mm	PET	500	50
AP-BPETDCDL	BetaPET™ Dome Lid (no hole) for Deli Containers	Ø 125mm	PET	500	50

BETAPET™ Portion Containers & Lids



CODE	DESCRIPTION	DIMENSIONS	MATERIAL	CARTON QTY	SLEEVE QTY
AP-BPETPC100	BetaPET™ 1oz Portion Cup	45mm x 29mm x 42mm	PET	2500	100
AP-BPETPC100LID	BetaPET™ Lid for 1oz Portion Cup	Ø 45mm	PET	2500	100
AP-BPETPC200	BetaPET™ 2oz Portion Cup	62mm x 42mm x 31mm	PET	2500	100
AP-BPETPC200LID	BetaPET™ Lid for 2oz Portion Cup	Ø 62mm	PET	2500	100

Square & Round Tubs/Containers



CODE	DESCRIPTION	DIMENSIONS	MATERIAL	CARTON QTY	SLEEVE QTY
APCST125	BetaPET™ 125ml Square Tub	86mm x 86mm x 25mm	PET	500	50
APCST250	BetaPET™ 250ml Square Tub	86mm x 86mm x 42mm	PET	500	50
APCST300	BetaPET™ 300ml Square Tub	86mm x 86mm x 50mm	PET	500	25
APCSTLID	BetaPET™ Lid to suit Square Tubs	91mm x 91mm x 8mm	PET	500	25
APFC100	BetaPET™ 100ml Round Container	75mm x 35mm	PET	1000	25
APFC150	BetaPET™ 150ml Round Container	75mm x 65mm	PET	1000	50
APFC200	BetaPET™ 200ml Round Container	75mm x 88mm	PET	1000	50
APFCLID	BetaPET™ Lid to suit Round Containers	78mm x 8mm	PET	1000	50

PET Coupe Cup & Lids



8oz Coupe Cup

Flat Lid

Dome Lid

CODE	DESCRIPTION	DIMENSIONS	MATERIAL	CARTON QTY	SLEEVE QTY
COUPEC	8oz Clear Stemmed Coupe Cup with Plimsol line to 210ml	Ø 92mm x 62mm	PET	480	20
COUPECFL	Flat Lid to Suit Coupe Cup	Ø 95.80mm x 6mm	PET	2000	100
COUPECDL	Dome Lid to Suit Coupe Cup	Ø 95.80mm x 26mm	PET	500	20

LockTop Clear Containers



LockTop Clear Pack



LockTop Clear Flat Pack



LockTop Clear Pack



LockTop Clear Burger Pack



LockTop Clear Muffin Pack



LockTop Clear Long Roll Pack



LockTop Clear Pack with
4 Compartments



ClearTop Cake Wedge
with Black PET Base

CODE	DESCRIPTION	DIMENSIONS	MATERIAL	CARTON QTY	SLEEVE QTY
LTSP43	LockTop Clear Pack	105mm x 90mm x 50mm	PVC	1000	100
LTP1	LockTop Clear Pack	125mm x 110mm x 65mm	PVC	500	Bulk
LTP2	LockTop Clear Pack	160mm x 120mm x 55mm	PVC	600	Bulk
LTP2F	LockTop Clear "Flat" Pack	160mm x 120mm x 40mm	PVC	600	Bulk
LTP3	LockTop Clear Pack	180mm x 120mm x 50mm	PVC	600	Bulk
LTBP	LockTop Clear Burger Pack	130mm x 128mm x 62mm	PVC	400	Bulk
LTBP-S	LockTop Clear Burger Pack Small	110mm x 110mm x 70mm	PVC	400	Bulk
LT4MUFFIN	LockTop Clear Muffin Pack	170mm x 170mm x 78mm	PVC	300	Bulk
LTP4	LockTop Clear Lunch Pack	230mm x 140mm x 55mm	PVC	200	Bulk
LTP5	LockTop Clear Lunch Pack	230mm x 140mm x 55mm	PVC	200	Bulk
LTPLRP	LockTop Clear Long Roll Pack	220mm x 80mm x 75mm	PVC	400	Bulk
LTPHBP	LockTop Baguette Pack	325mm x 100mm x 76mm	PVC	600	Bulk
ZKC01	LockTop Clear Pack	500mm x 250mm x 50mm	PVC	100	Bulk
ZKC04	LockTop Clear Pack with 4 Compartments	500mm x 250mm x 50mm	PVC	100	Bulk
APCW86SET	ClearTop Cake Wedge with Black PET Base	155mm x 100mm x 90mm	PVC/PET	200	20

Open Trays & Lidding Film

Open Trays



Clear Tray



2 Compartment
Clear Tray



2 Compartment
Clear Tray

CODE	DESCRIPTION	DIMENSIONS	MATERIAL	CARTON QTY
AL103	Clear Tray	165mm x 89mm x 45mm	PVC	2000
AP1032	Two Compartment Clear Tray; Compartment 1: 70mm wide Compartment 2: 30mm wide	165mm x 89mm x 45mm	PVC	2000
AP1035	Two Compartment Clear Tray; Compartment 1: 50mm wide Compartment 2: 50mm wide	165mm x 89mm x 45mm	PVC	2000

Lidding Film



Laminate Film



SPX Film

CODE	DESCRIPTION	DIMENSIONS	MATERIAL	CARTON QTY
ASF240x750/3	FilmSeal Automatic Lidding Film	240mm x 750m, 3" core	PVC	1
ASF174x750/3	FilmSeal Automatic Lidding Film	174mm x 750m, 3" A	PVC	1
ASF174x400/1	FilmSeal Automatic Lidding Film	174mm x 400m 1.5" ADH IN	PVC	1
ASF185X750/3	FilmSeal Automatic Lidding Film	185mm x 750m	PVC	1
ASF185X750/3-V	FilmSeal Automatic Lidding Film	185mm x 750m	PVC	1
ASF185X600/3	FilmSeal Automatic Lidding Film	185mm x 600m	PVC	1
ASF92X400/1-V	FilmSeal Automatic Lidding Film	92mm x 400m	PVC	1
ASF168X400/1-V	FilmSeal Automatic Lidding Film	168mm x 400m 1.5" ADH IN	PVC	1
ASF178X152/1-V	FilmSeal Automatic Lidding Film	178mm x 152m	PVC	1
ASF152X750/3-V	FilmSeal Automatic Lidding Film	152mm x 750m 3" A	PVC	1

(Additional sizes available upon request)

TAKEAWAY Food Containers



Takeaway Container meets
Australian-made design and quality.

- Available in multiple sizes with flat or dome lid options
- Microwavable, reusable and refrigerator safe
- Ideal for takeaway or home delivery service
- Provides the perfect portion control for takeaway
- Budget friendly option



100% Recyclable



Microwave and
Freezer safe



Suitable for hot and
cold food



Reusable



HACCP Accredited

Takeaway Rectangular Containers & Lids



CODE	DESCRIPTION	DIMENSIONS	MATERIAL	CARTON QTY	SLEEVE QTY
CHCM500	Rectangular 500ml Container, Clear	120mm x 175mm x 38mm	PET	500	50
CHCM500B	Rectangular 500ml Container, Black	120mm x 175mm x 38mm	PET	500	50
CHCM650	Rectangular 650ml Container, Clear	120mm x 175mm x 50mm	PET	500	50
CHCM650B	Rectangular 650ml Container, Black	120mm x 175mm x 50mm	PET	500	50
CHCM700	Rectangular 700ml Container, Clear	120mm x 175mm x 55mm	PET	500	50
CHCM750	Rectangular 750ml Container, Clear	120mm x 175mm x 55mm	PET	500	50
CHCM750B	Rectangular 750ml Container, Black	120mm x 175mm x 55mm	PET	500	50
CHCM1000	Rectangular 1000ml Container, Clear	120mm x 175mm x 70mm	PET	500	50
CHCMLID	Rectangular Lid to suit above Containers, Clear	172mm x 120mm	PET	500	50
CHCMLIDDOME	Rectangular Dome Lid to suit above Containers, Clear	172mm x 120mm	PET	500	100

Freezer Grade Takeaway Containers & Lids



CODE	DESCRIPTION	DIMENSIONS	MATERIAL	CARTON QTY	SLEEVE QTY
CHCM1000F	Rectangular Freezer Grade 1000ml Container, Clear	120mm x 175mm x 70mm	PP	500	50
CHCM750F	Rectangular Freezer Grade 750ml Container, Clear	120mm x 175mm x 55mm	PP	500	50
CHCM500F	Rectangular Freezer Grade 500ml Container, Clear	120mm x 175mm x 38mm	PP	500	50
CHCMLIDF	Rectangular Lid to suit above Containers, Clear	172mm x 120mm	PP	500	50
CHCR16F	Round Freezer Grade 440ml Container, Clear	120mm x 175mm x 55mm	PP	500	50
CHCRLIDF	Round Lid to suit 440ml Container, Clear	120mm Ø	PP	500	50

Takeaway Round Containers & Lids



CODE	DESCRIPTION	DIMENSIONS	MATERIAL	CARTON QTY	SLEEVE QTY
CHC2	Round 70ml Container, Clear	70mm x 24mm deep	PP	1000	50
CHC4	Round 120ml Container, Clear	70mm x 48mm deep	PP	1000	50
CHC4LID	Round Lid to suit 70ml & 120ml Containers, Clear	70mmØ	PP	1000	50
CHCR8	Round 225ml Container, Clear	120mm x 40mm deep	PET	1000	50
CHCR8BK	Round 225ml Container, Black	120mm x 40mm deep	PET	1000	50
CHCR10	Round 280ml Container, Clear	120mm x 48mm deep	PET	1000	50
CHCR10BK	Round 280ml Container, Black	120mm x 48mm deep	PET	1000	50
CHCR16	Round 440ml Container, Clear	120mm x 63mm deep	PET	500	50
CHCR16BK	Round 440ml Container, Black	120mm x 63mm deep	PET	500	50
CHCR20	Round 540ml Container, Clear	120mm x 78mm deep	PET	500	50
CHCR25	Round 700ml Container, Clear	120mm x 90mm deep	PET	500	50
CHCR30	Round 850ml Container, Clear	120mm x 105mm deep	PET	500	50
CHCRLID	Round Lid to suit above Containers, Clear	120mm Ø	PET	500	50
CHCRMLIDDOME	Round Dome Lid to suit above Containers, Clear	120mm Ø	PET	500	100
CHSC190	Round 190mm Sundae Cup, Clear	190mm Ø	PET	1000	50
CHSC190L	Round Lid to suit 190ml Cup, Clear	190mm Ø	PET	1000	50

Noodle Bowls & Lids



Black Noodle Bowl



White Noodle Bowl

CODE	DESCRIPTION	DIMENSIONS	MATERIAL	CARTON QTY	SLEEVE QTY
NB1050B	1050ml Noodle Bowl, Black	174mm x 74mm	PP	400	50
NB1050W	1050ml Noodle Bowl, White	174mm x 74mm	PP	400	50

Meal Trays



Black Tray



Clear Lid

CODE	DESCRIPTION	DIMENSIONS	MATERIAL	CARTON QTY
BF5200BK/100	Executive Meal Container Black	257mm x 257mm x 50mm	PETE	100
BF5250CL/100	Executive Meal Container Lid	257mm x 257mm x 19mm	PETE	100

FRESHVIEW™

Reusable Microwavable Containers



Eye-catching Ergonomic Design

Sleek attractive black bases designed with smooth sides for ease of use

Leak resistant and table ready

Closure design keeps lids secure during handling and transport with leak-resistance to eliminate messy spills. Strong, durable bases provide table-ready presentation in a cut-resistant material.

High Heat Performance and Microwavable

Bases and Polypropylene lids will withstand temperatures to 110°C in warming units, under heat lamps and in microwave.



100% Recyclable



Microwave and
Freezer safe



Suitable for hot and
cold food



Reusable



HACCP Accredited

Freshview™

Microwavable Containers & Lids

(Non stock service lines - available on application)



CODE	DESCRIPTION	DIMENSIONS	MATERIAL	CARTON QTY
FVM416B	Freshview™ 16oz (473ml) Microwave Entree Container, Black	197mm x 146mm x 28mm	PP	250
FVM424B	Freshview™ 24oz (710ml) Microwave Entree Container, Black	223mm x 161mm x 43mm	PP	250
FVMW432B	Freshview™ 32oz (946ml) Microwave Entree Container, Black	223mm x 161mm x 54mm	PP	250
FVL4005	Freshview™ Clear Dome Lid to suit 16oz, 24oz & 32oz Microwave Containers	224mm x 162mm x 17mm	PET	250
FVL405PP	Freshview™ Microwave Safe Clear Dome Lid to suit 16oz, 24oz & 32oz Microwave Containers	224mm x 162mm x 27mm	PP	250
FVMR710	Freshview™ 32oz (946ml) Microwave Container, Black	260mm x 184mm x 36mm	PP	250
FVMR712	Freshview™ 2 Compartment 21oz/10oz (621ml/296ml) Microwave Container, Black	260mm x 184mm x 38mm	PP	250
FVMR713	Freshview™ 3 Compartment 15oz/5oz/5oz (444ml/148ml/148ml) Microwave Container, Black	260mm x 184mm x 34mm	PP	250
FVL710D	Freshview™ Clear Dome Lid to suit MR700 Range	260mm x 184mm x 55mm	PP	250
FVMW813B	Freshview™ 3 Compartment Microwave Platter, Black	240mm x 150mm x 35mm	PP	250
FVL8000	Freshview™ Lid to suit MW800 Range	240mm x 150mm x 35mm	PP	250
FVMW912BA	Freshview™ 12oz (355ml) Microwave Casserole, Black	203mm x 145mm x 54mm	PP	250
FVL9016A	Freshview™ Clear Dome Lid to Suit FVMW900 Range	203mm x 144mm x 24mm	PP	250
FVL9016AB	Freshview™ Clear 3 Compartment Dome Lid to Suit FVMW900 Range	203mm x 146mm x 36mm	PP	250
FVCR	Freshview™ Large Chicken Roaster Base & Lid Combo	263mm x 184mm x 126mm *Ordered on request	PP	100
MRM1070	Freshview™ Half Slab Rib Base & Lid Combo	203mm x 146mm x 36mm	PP	100

MICROWAVABLE TRAYS & BOWLS

INCREDI-BOWL™

VALU-BOWL™

MEGA-MEAL™



High Heat Performance and Microwavable

Bases and Polypropylene lids will withstand temperatures to 110°C in warming units, under heat lamps and in microwave.

Reduce, Reuse, Recycle

Bowls and lids are made with durable polypropylene. Dishwasher and microwave safe, the containers can be reused multiple times. Eligible for recycling after repeated use.

Leak Resistant and Food Visibility

Snap closure assures leak-resistant seal remains securely in place to eliminate spills during handling and transport. Clear lids with anti-fog technology keeps food looking fresh. Table-ready presentation and reclosable for leftovers.



100% Recyclable



Microwave and Freezer safe



Suitable for hot and cold food



Reusable



HACCP Accredited

Incredi-Bowl™ Microwavable Bowls & Lids

(Non stock service lines - available on application)



5oz Bowl

10oz Bowl

Lid for 5oz & 10oz Bowl

12oz Bowl

16oz Bowl

Lid for 12oz & 16oz Bowl

CODE	DESCRIPTION	DIMENSIONS	MATERIAL	CARTON QTY
IBM4805B	Incredi-Bowl™ 5oz (148ml) Microwave Bowl, Black	120mm x 30mm	PP	500
IBM4810B	Incredi-Bowl™ 10oz (296ml) Microwave Bowl, Black	120mm x 54mm	PP	500
IBLH4800D	Incredi-Bowl™ Clear Anti-Fog Lid to suit 5oz & 10oz Microwave Bowls	114mm x 9mm	PP	500
IBM5816B	Incredi-Bowl™ 12oz (355ml) Microwave Bowl, Black	146mm x 51mm	PP	500
IBM5820B	Incredi-Bowl™ 16oz (475ml) Microwave Bowl, Black	146mm x 62mm	PP	500
IBLH5800DP	Incredi-Bowl™ Clear Anti-Fog Lid to suit 12oz & 16oz Microwave Bowls	14mm x 15mm	PP	500

Valu-Bowl™ Microwavable Bowl & Lid

(Non stock service lines - available on application)



28oz Bowl

Lid for 28oz Bowl

CODE	DESCRIPTION	DIMENSIONS	MATERIAL	CARTON QTY
VB28B-A	Valu-Bowl™ 28oz (828ml) Microwave Bowl, Black	216mm x 35mm	PP	288
VB28L-A	Valu-Bowl™ Clear Anti-Fog Lid to suit 28oz Microwave Bowl	216mm x 20mm	PP	288

Mega Meal™ Service Tray & Lid

(Non stock service lines - available on application)



100oz Service Tray

Lid for 100oz Service Tray

CODE	DESCRIPTION	DIMENSIONS	MATERIAL	CARTON QTY
MMFP250	Mega-Meal™ 100oz (2957ml) Service Tray, Black	315mm x 260mm x 65mm	PP	100
MMFP250L	Mega-Meal™ Clear Anti-Fog Lid to suit 100oz Service Tray	315mm x 260mm x 31mm	PP	100

CULINARY CLASSIC™

Reuseable
Microwavable
Clamshells



Bringing your Food into Focus

The Culinary Classic Series delivers the “dining out” experience for customers on the go – anywhere, any time, any meal. Allow customers to see the meals and snacks specially prepared for them in attractive black bases.

Excellent clarity on the vented, polypropylene lids with exclusive anti-fog technology keeps your fresh and appealing food shining through.

Withstands temperatures of up to 110°C under heat lamps hot displays and microwaves.



100% Recyclable



Microwave and Dishwasher safe



Suitable for hot and cold food



Reusable



HACCP Accredited

Culinary Classic™

Microwavable Clamshells

(Non stock service lines - available on application)



One Compartment Clamshell



Two Compartment Clamshell



One Compartment Clamshell



Three Compartment Clamshell



Three Compartment Clamshell
with 3 Compartment Lid

CODE	DESCRIPTION	DIMENSIONS	MATERIAL	CARTON QTY
CC6911B	Culinary Classic™ Microwave-Safe Clamshell, One Compartment Base and Lid	243mm x 169mm x 77mm	PP	100
CC6922B	Culinary Classic™ Microwave-Safe Clamshell, Two Compartment Base and Lid	243mm x 169mm x 77mm	PP	100
CC9911B	Culinary Classic™ Microwave-Safe Clamshell, One Compartment Base and Lid	241mm x 230mm x 77mm	PP	100
CC9931B	Culinary Classic™ Microwave-Safe Clamshell, Three Compartment Base and Lid	241mm x 230mm x 77mm	PP	100
CC9933B	Culinary Classic™ Microwave-Safe Clamshell, Three Compartment Base and Three Compartment Lid	241mm x 230mm x 77mm	PP	100



NSW (Head Office)
Level 2, 55 Mentmore Avenue
Rosebery NSW 2018
Tel: (02) 9697 2499
Email: salesnsw@anchorpackaging.com.au

VICTORIA
Level 1, 24 Logis Boulevard
Dandenong South VIC 3175
Tel: (03) 9873 0324
Email: salesvic@anchorpackaging.com.au

BRISBANE
77 Logistics Pl,
Larapinta QLD 4110
Tel: 0413 877 524
Email: salesqld@anchorpackaging.com.au



Anchor Packaging Australia



@anchorpackagingaustralia



www.anchorpackaging.com.au